

EXHIBIT E

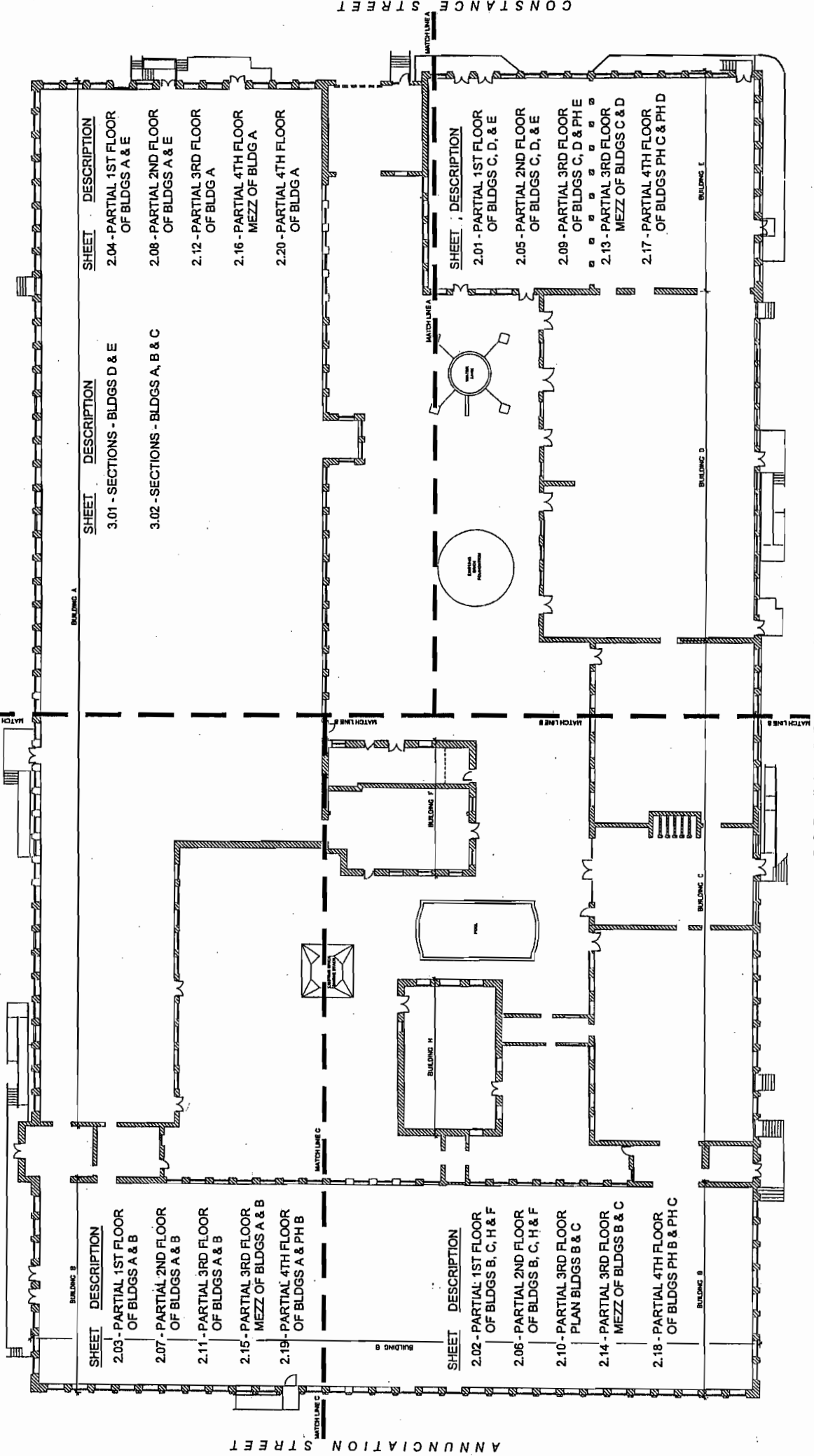
**COMPLETELY REVISED BUILDING PLANS
FOR
THE COTTON MILL CONDOMINIUMS**

COTTON MILL CONDOMINIUMS

920 Poyeffarre Street New Orleans, Louisiana 70130

EXHIBIT

JOHN CHURCHILL CHASE STREET



SHEET	DESCRIPTION
2.04	- PARTIAL 1ST FLOOR OF BLDGS A & E
2.08	- PARTIAL 2ND FLOOR OF BLDGS A & E
2.12	- PARTIAL 3RD FLOOR OF BLDG A
2.16	- PARTIAL 4TH FLOOR MEZZ OF BLDG A
2.20	- PARTIAL 4TH FLOOR OF BLDG A

SHEET	DESCRIPTION
3.01	- SECTIONS - BLDGS D & E
3.02	- SECTIONS - BLDGS A, B & C

SHEET	DESCRIPTION
2.01	- PARTIAL 1ST FLOOR OF BLDGS C, D, & E
2.05	- PARTIAL 2ND FLOOR OF BLDGS C, D, & E
2.09	- PARTIAL 3RD FLOOR OF BLDGS C, D & PH E
2.13	- PARTIAL 3RD FLOOR MEZZ OF BLDGS C & D
2.17	- PARTIAL 4TH FLOOR OF BLDGS PH C & PH D

SHEET	DESCRIPTION
2.03	- PARTIAL 1ST FLOOR OF BLDGS A & B
2.07	- PARTIAL 2ND FLOOR OF BLDGS A & B
2.11	- PARTIAL 3RD FLOOR OF BLDGS A & B
2.15	- PARTIAL 3RD FLOOR MEZZ OF BLDGS A & B
2.19	- PARTIAL 4TH FLOOR OF BLDGS A & PH B

SHEET	DESCRIPTION
2.02	- PARTIAL 1ST FLOOR OF BLDGS B, C, H & F
2.06	- PARTIAL 2ND FLOOR OF BLDGS B, C, H & F
2.10	- PARTIAL 3RD FLOOR PLAN BLDGS B & C
2.14	- PARTIAL 3RD FLOOR MEZZ OF BLDGS B & C
2.18	- PARTIAL 4TH FLOOR OF BLDGS PH B & PH C



HRI Properties, Inc.



HCI ARCHITECTURE, INC.
INTERNATIONAL OFFICE

NO. ISSUE _____ DATE _____

DRAWN _____ CHECKED _____
 ISSUE DATE 01-18-2004
 PROJECT NUMBER 311
 DRAWING FILE NAME 210

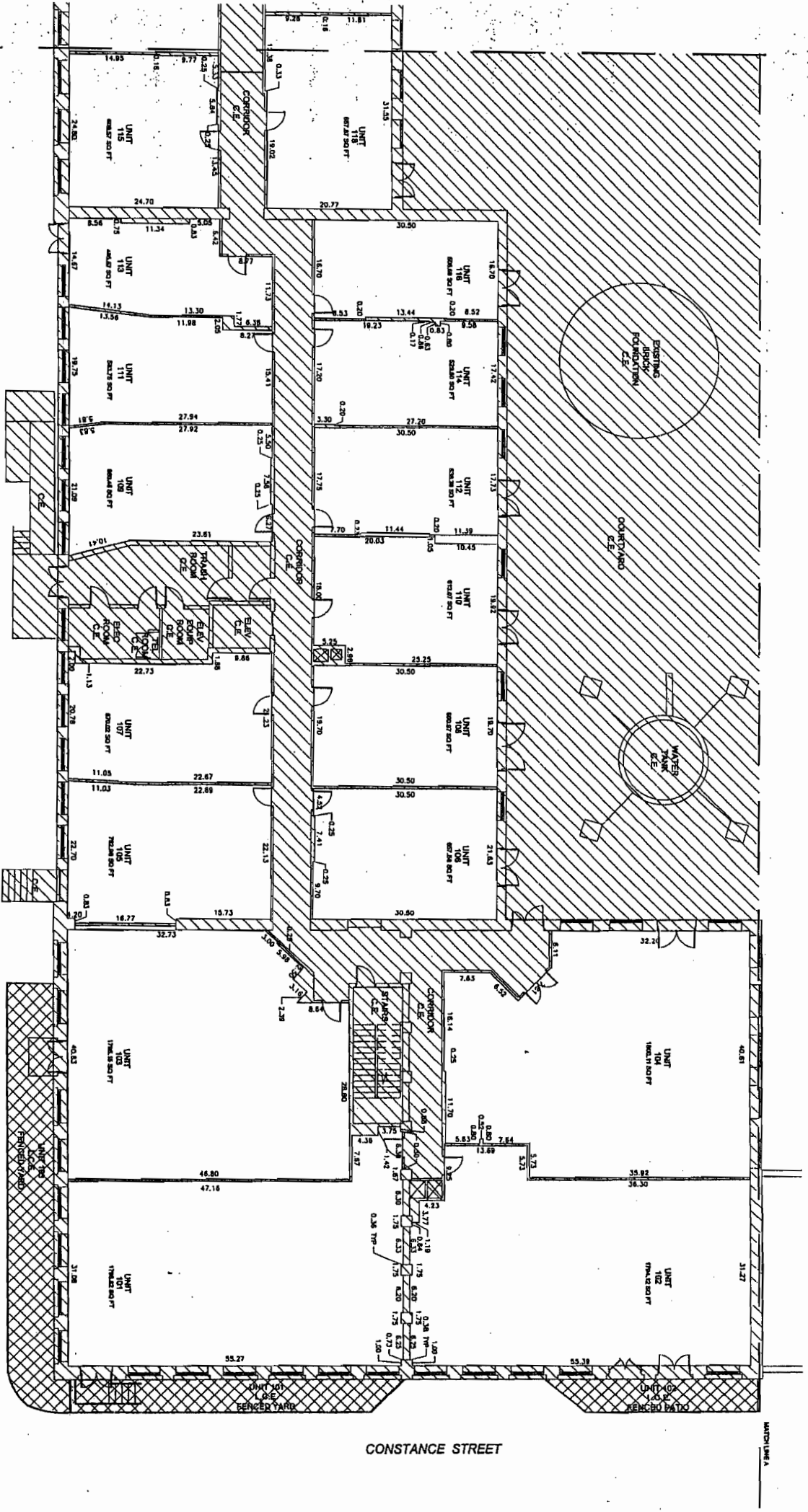
COVER SHEET

A1
210
KEY PLAN
N.T.S.

POEFFARRE STREET

2.00

A1
2.01
PARTIAL FIRST FLOOR PLAN
SCALE = 1/4"



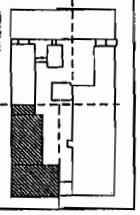
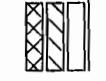
POEYFARRE STREET

CONSTANCE STREET

NOTE:
DIMENSIONS INDICATED ON THESE DRAWINGS WERE OBTAINED FROM FIELD MEASUREMENTS IN CONNECTION WITH PREPARATION OF THE ORIGINAL CONSTRUCTION DOCUMENTS. FIELD MEASUREMENTS AND THEREFORE DIMENSIONS SHOULD NOT BE CONSIDERED DIMENSIONS BUT FIELD APPROXIMATE DIMENSIONS.

NOTE:
ALL UNIT DIMENSIONS AND ROOM LIMIT FACE OF WALL FROM INTERIOR FINISH TO INTERIOR FINISH AND FROM LIMIT FACE OF COMMON WALL TO LIMIT FACE OF EXTERIOR WALL.

LEGEND
UNIT
C.E. - COMMON ELEMENT
L.C.E. - LIMITED COMMON ELEMENT



PROJECT
DRAWN BY: [Name]
CHECKED BY: [Name]
DATE: 9-13-2004
PROJECT NUMBER: 311
DRAWING FILE NAME: 2.01

PARTIAL 1ST FLOOR OF BLDGS C, D & E
2.01

COTTON MILL CONDOMINIUMS
820 Poeyfarre Street
New Orleans, Louisiana 70130

HCI
ARCHITECTURE, INC.
A COMMERCIAL COMPANY

HRI
Properties, Inc.

EXHIBIT E

EXHIBIT E

COTTON MILL
CONDOMINIUMS
920 Poeyfarre Street
New Orleans, Louisiana 70130



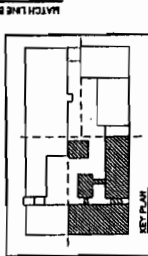
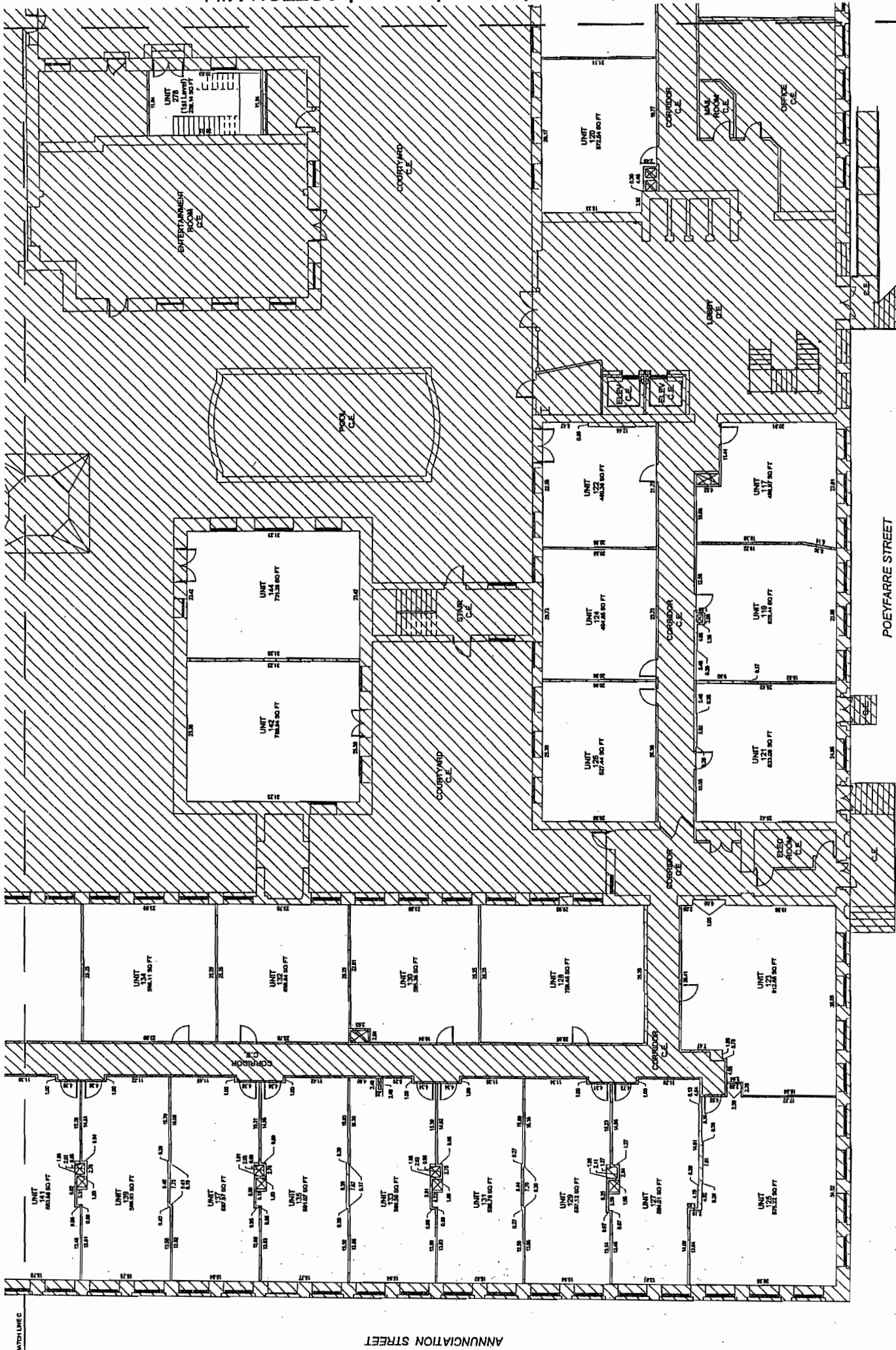
HCI
ARCHITECTURAL &
INTERIORS

NO. ISSUE DATE

DATE
PROJECT NUMBER
DRAWING FILE NAME

PARTIAL 1ST
FLR OF BLDGS
B, C, H & F

2.02



LEGEND
UNIT
C.E. - COMMON ELEMENT
L.C.E. - LIMITED COMMON ELEMENT

NOTE:
ALL UNIT DIMENSIONS ARE FROM UNIT SIZE OF
STUD TO UNIT SIZE OF STUD OF FINISHING WALLS
AND FROM FINISHING WALL TO FINISHING WALL
WALL TO INSIDE FACE OF EXTERIOR WALL.

NOTE:
DIMENSIONS INDICATED ON THESE DRAWINGS WERE DETERMINED
FROM FIELD MEASUREMENTS IN CONJUNCTION WITH INFORMATION
PROVIDED BY THE ARCHITECT AND THEREFORE SHOULD NOT BE CONSIDERED
CERTIFIED DIMENSIONS BUT INSTEAD APPROXIMATE BUILDING
DIMENSIONS.

PARTIAL FIRST FLOOR PLAN
1/8" = 1'-0"

A1
2.02

JOHN CHURCHILL CHASE STREET

EXHIBIT E

COTTON MILL
CONDOMINIUMS
920 Poylarte Street
New Orleans, Louisiana 70130

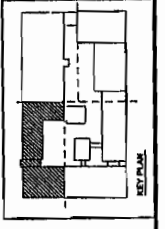
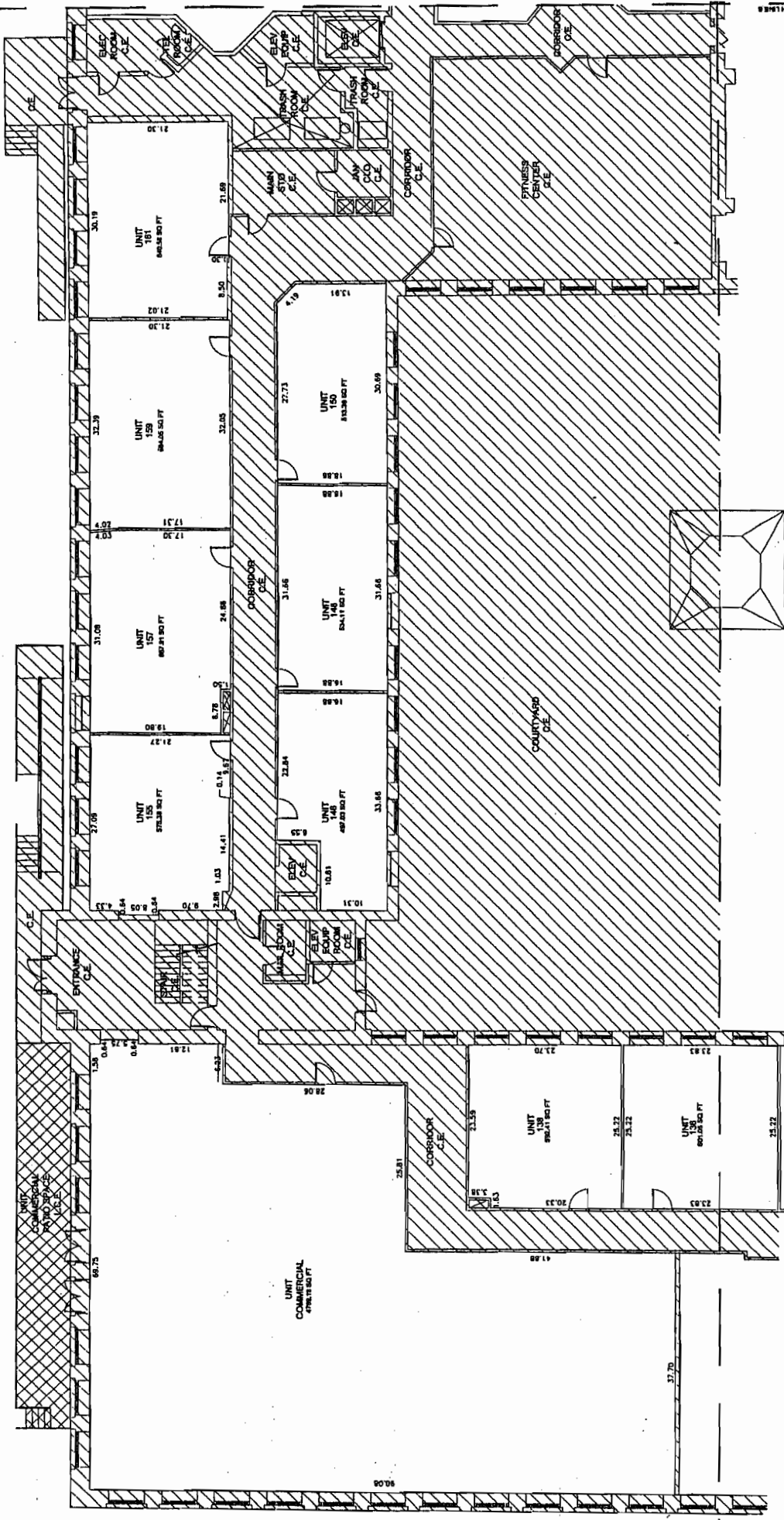


NO. _____ DATE _____

DRAWN: _____ CHECKED: _____
ISSUE DATE: 01-20-2004
PROJECT NUMBER: 311
DRAWING FILE NAME: 210

PARTIAL 1ST
FLOOR OF
BLDG'S A & B

2.03



LEGEND
UNIT
C.E. - COMMON ELEMENT
L.C.E. - LIMITED COMMON ELEMENT

NOTE:
ALL UNIT DIMENSIONS ARE FROM UNIT SIDE OF
STUD TO UNIT SIDE OF STUD OR DRIVING WALLS
WALL TO INSIDE FACE OF EXTERIOR WALL.

NOTE:
DIMENSIONS INDICATED ON THESE DRAWINGS WERE DETERMINED
FROM THE ORIGINAL CONSTRUCTION RECORDS AND SUBMITTALS
FROM THE ORIGINAL CONTRACTOR AND ARCHITECT DATED
AUGUST 14, 1999 AND THEREFORE SHOULD NOT BE CONSIDERED
CERTIFIED DIMENSIONS BUT INSTEAD APPROXIMATE BUILDING
DIMENSIONS.

11 PARTIAL FIRST FLOOR PLAN
210 1/8" = 1'-0"

ANNUNCIATION STREET

MATCH LINE C

MATCH LINE B



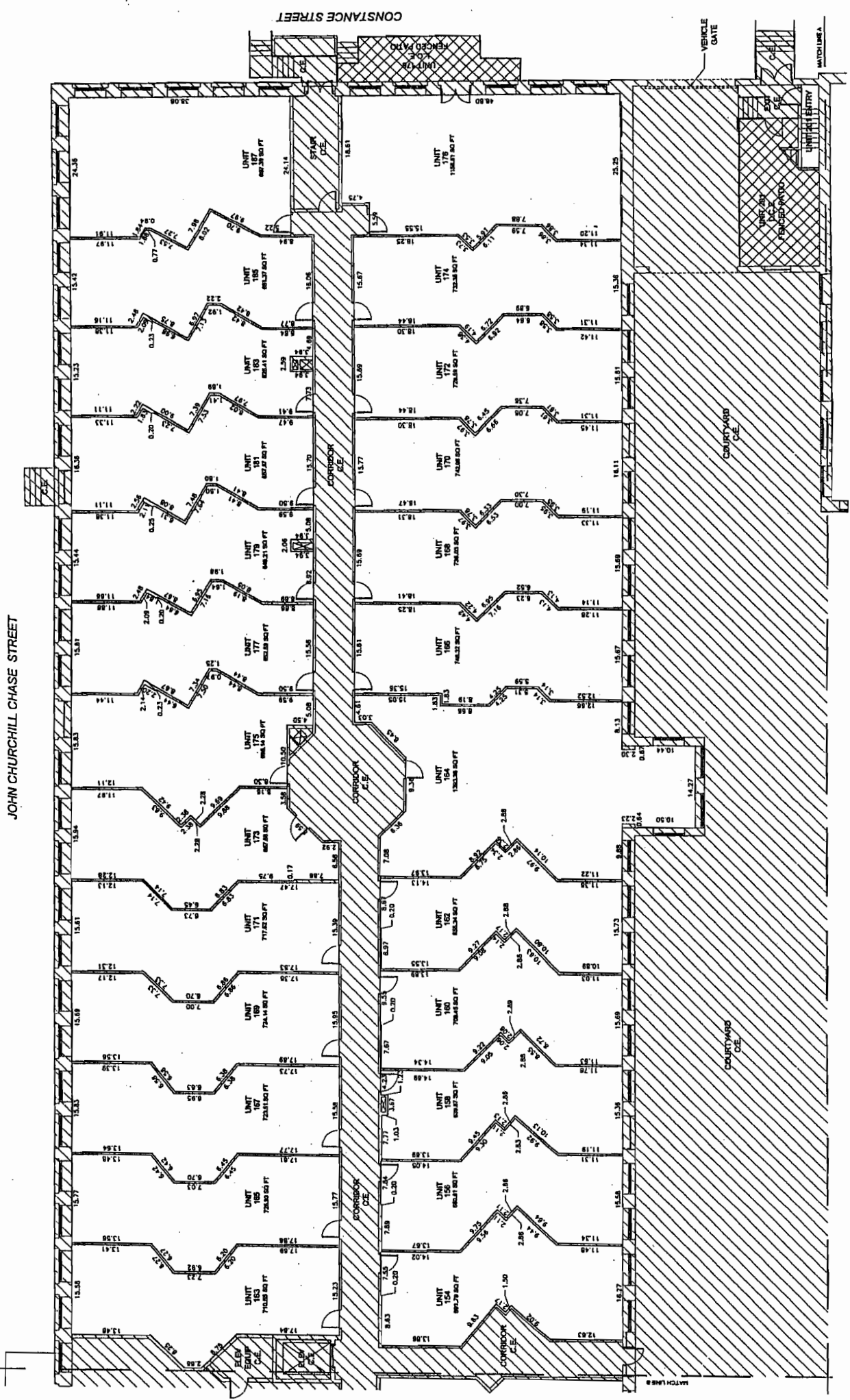
HCI
ARCHITECTURAL, INC.
A PROFESSIONAL CORPORATION

NO. ISSUE DATE

DRAWN: E.F. BROWN
ISSUE DATE: 01-18-2004
PROJECT NUMBER: 311
DRAWING FILE NAME: 2.04

PARTIAL 1ST FLOOR OF BLDGS A & E

2.04



JOHN CHURCHILL CHASE STREET

CONSTANCE STREET

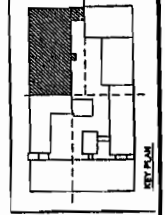
VEHICLE GATE

MATCHLINE A

LEGEND
UNIT
C.E. - COMMON ELEMENT
L.C.E. - LIMITED COMMON ELEMENT

NOTE: DIMENSIONS ARE FROM UNIT FACE OF WALL TO UNIT FACE OF WALL OF COMMON WALLS AND FROM UNIT FACE OF STUD OF CORRIDOR WALL TO INSIDE FACE OF EXTERIOR WALL.

NOTE: DIMENSIONS INDICATED ON THESE DRAWINGS WERE DETERMINED FROM FIELD MEASUREMENTS IN CONJUNCTION WITH INFORMATION FROM THE ORIGINAL CONSTRUCTION DOCUMENTS (DATED 01-18-2004). THESE DIMENSIONS MAY NOT REPRESENT CERTIFIED DIMENSIONS BUT INSTEAD APPROXIMATE BUILDING DIMENSIONS.



PARTIAL FIRST FLOOR PLAN
1/8" = 1'-0"

EXHIBIT E

COTTON MILL CONDOMINIUMS
 820 Poeyfarre Street
 New Orleans, Louisiana 70130



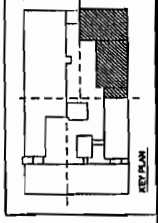
HCI
 ARCHITECTURE, P.C.
 A PROFESSIONAL CORPORATION

NO. ISSUE DATE

ORDINANCE NO. 10-10-2004
 ISSUE DATE 01-30-2004
 PROJECT NUMBER 311
 DRAWING FILE NAME 2.05

PARTIAL 2ND FLOOR OF BLDGS C, D & E

2.05



LEGEND
 UNIT
 C.E. - COMMON ELEMENT
 L.C.E. - LIMITED COMMON ELEMENT

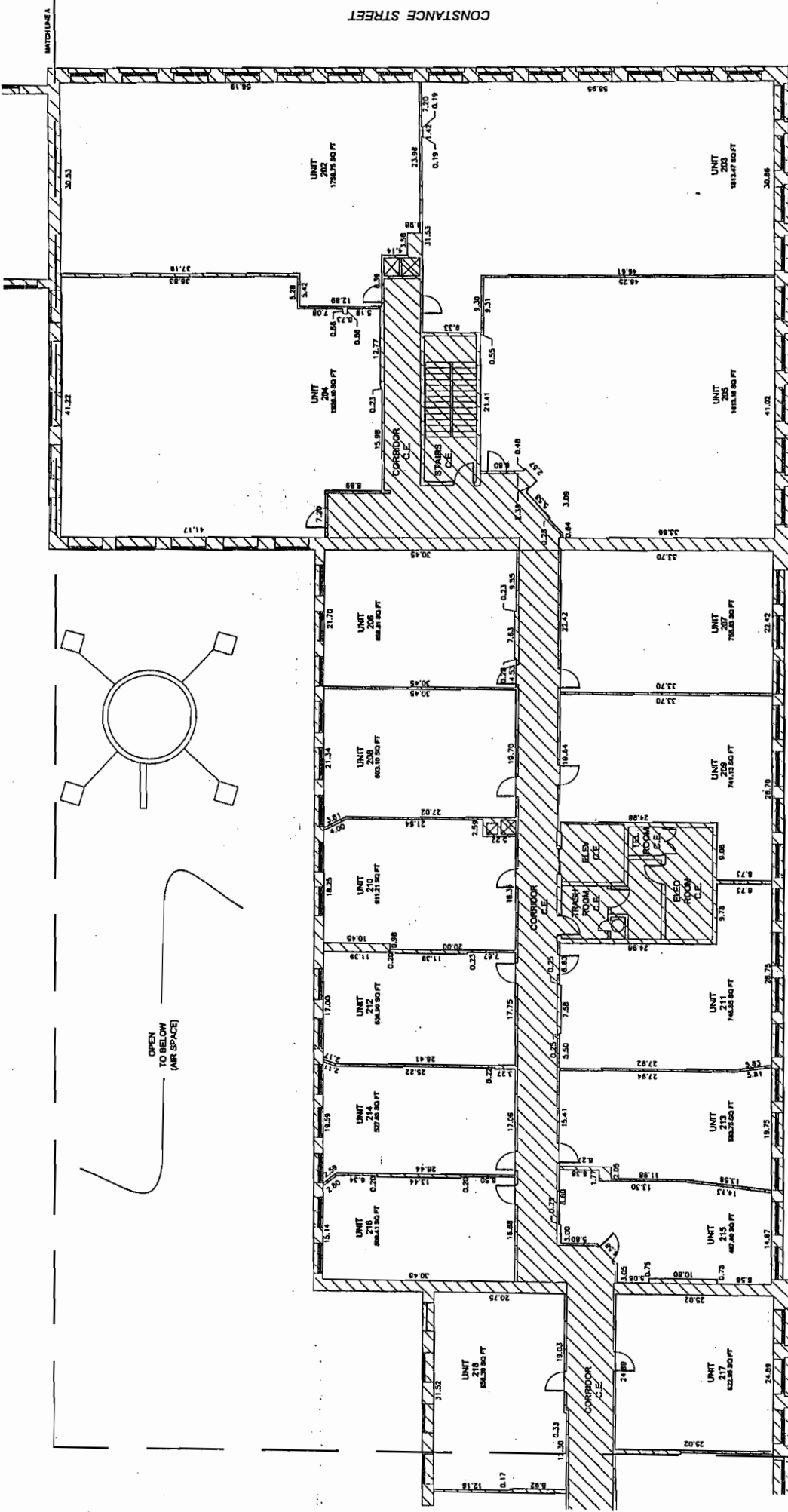
NOTE: DIMENSIONS ARE FROM UNIT SIDE OF STUB TO UNIT SIDE OF STUB OF DELIMITING WALLS AND FROM UNIT SIDE OF STUB OF CORRIDOR WALL TO INSIDE FACE OF ENTRANCE HALL.

NOTE: DIMENSIONS INDICATED ON THESE DRAWINGS WERE DETERMINED FROM FIELD MEASUREMENTS IN CONJUNCTION WITH INFORMATION PROVIDED BY THE ARCHITECT. FIELD MEASUREMENTS OBTAINED AUGUST 12, 1999 AND DIMENSIONS SHOULD NOT BE CONSIDERED CERTIFIED DIMENSIONS BUT INSTEAD APPROXIMATE BUILDING DIMENSIONS.



PARTIAL SECOND FLOOR PLAN
 AT 2.05
 N.P. = 1'-0"

POEYFARRE STREET



OPEN TO BELOW (AIR SPACE)

EXHIBIT E

COTTON MILL
CONDOMINIUMS
820 Poyfarr Street
New Orleans, Louisiana 70130

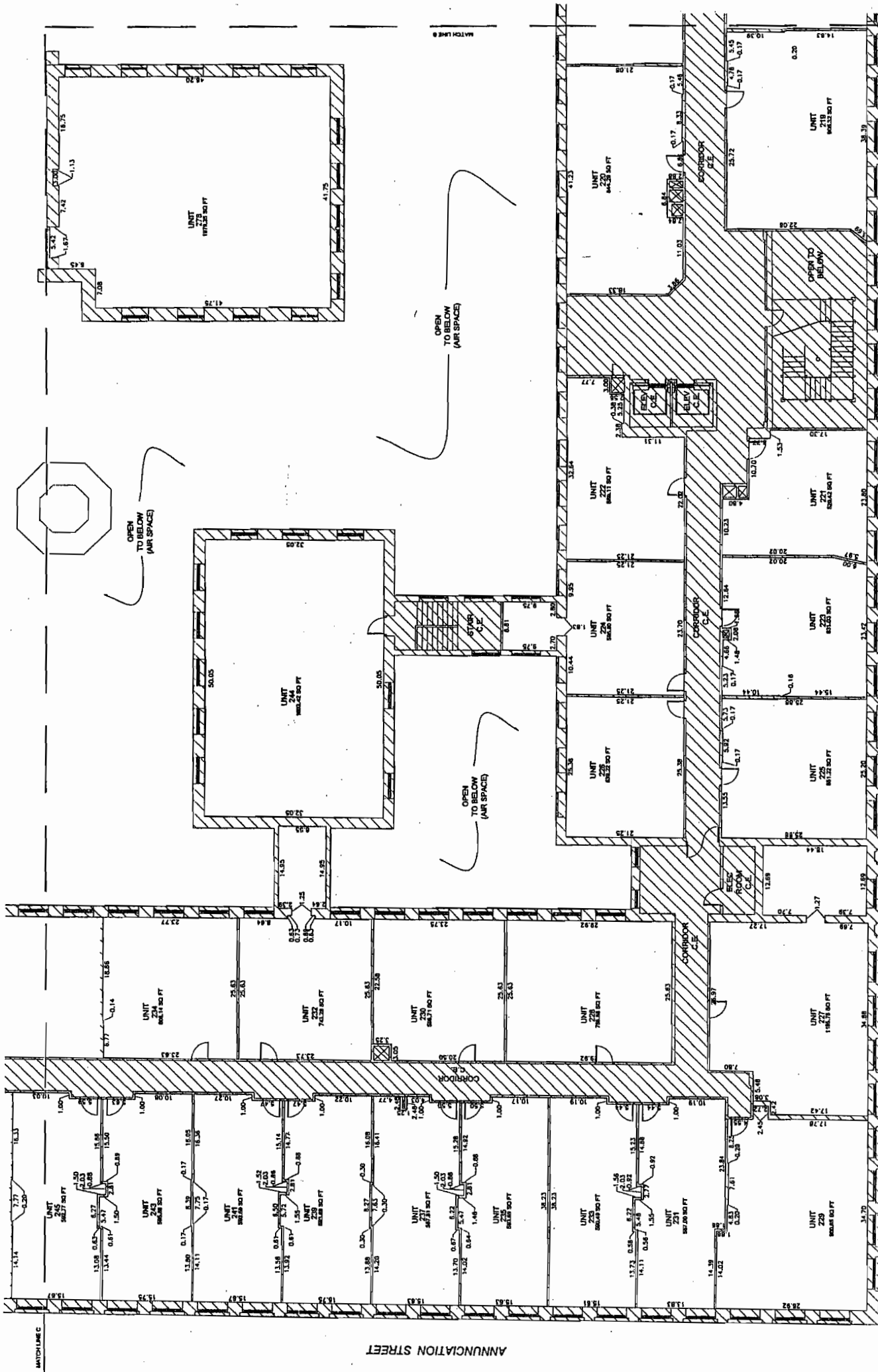


NO. ISSUE DATE

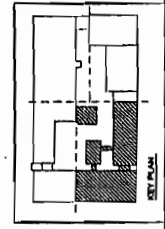
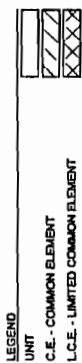
DRAWN BY: [blank] CHECKED BY: [blank]
ISSUE DATE: 01-20-2008 PROJECT NUMBER: 311
DRAWING FILE NAME: 2.06

PARTIAL 2ND
FLR OF BLDGS
B, C, H & F

2.06



NOTE: DIMENSIONS INDICATED ON THESE DRAWINGS WERE DETERMINED FROM FIELD MEASUREMENTS IN CONJUNCTION WITH INFORMATION FROM THE ORIGINAL CONSTRUCTION DOCUMENTS. DIMENSIONS SHOWN ON THESE DRAWINGS SHOULD NOT BE CONSIDERED CONTRACT DIMENSIONS BUT RATHER APPROXIMATE DIMENSIONS.



PARTIAL SECOND FLOOR PLAN
1/8" = 1'-0"
DATE: 01-20-2008

JOHN CHURCHILL CHASE STREET

COTTON MILL
CONDOMINIUMS
920 Poyfarré Street
New Orleans, Louisiana 70130

EXHIBIT



HRI Properties, Inc.



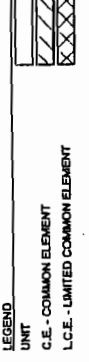
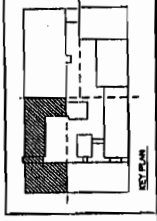
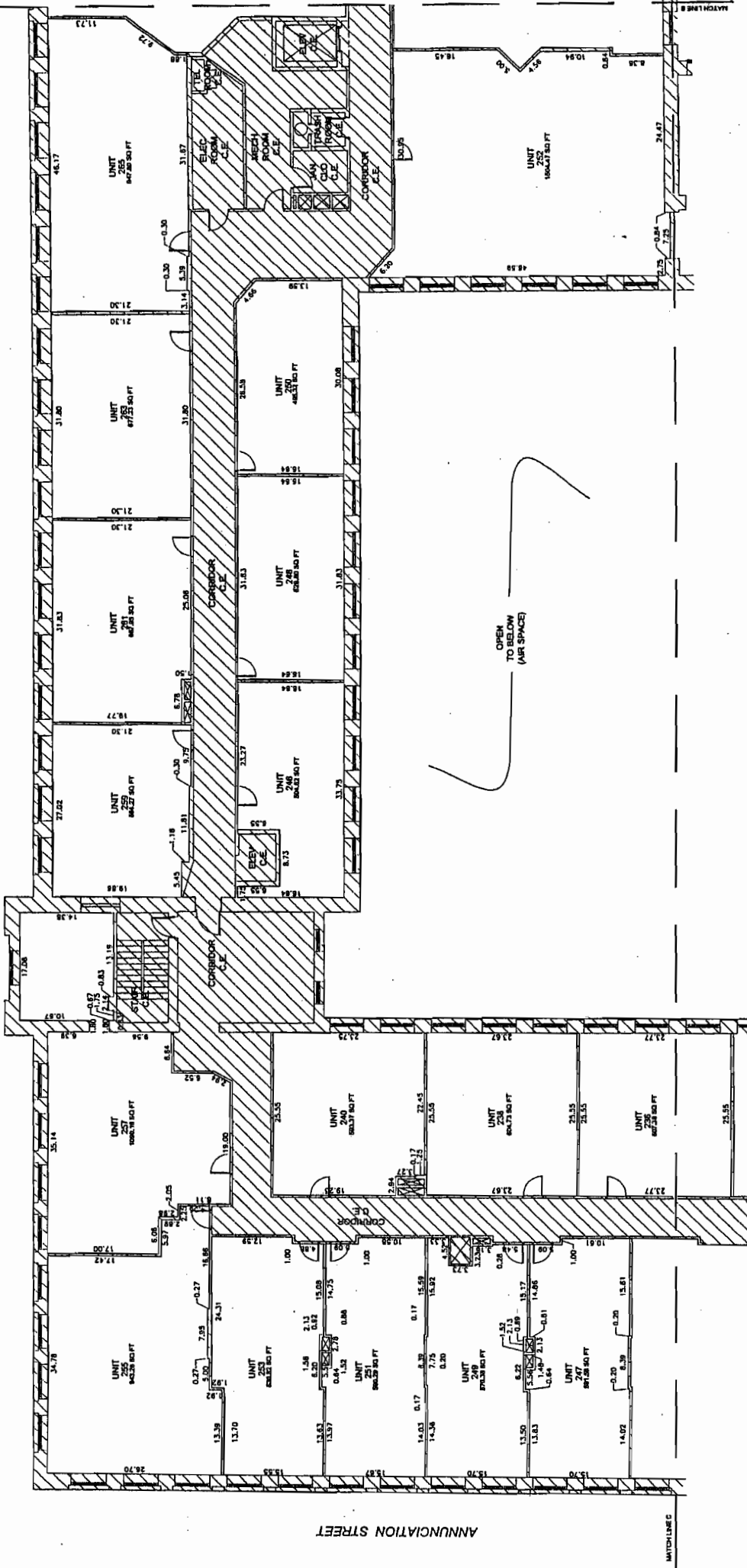
HCI ARCHITECTURE, INC.
ARCHITECTS

NO. _____ DATE _____
ISSUE _____

DRAWN _____ CHECKED _____
SCALE DATE 01-08-2004
PROJECT NUMBER 311
DRAWING FILE NAME 2107

PARTIAL 2ND
FLOOR OF
BLDG'S A & B

2.07



NOTE: ALL DIMENSIONS ARE FROM UNIT SIDE OF
STUD TO UNIT SIDE OF STUD OF ADJACENT WALLS
AND FROM UNIT SIDE OF STUD OF COMMON
WALL TO INSIDE FACE OF PERIMETER WALL.

NOTE:
DIMENSIONS INDICATED ON THESE DRAWINGS WERE DETERMINED
FROM FIELD MEASUREMENTS IN CONNECTION WITH INFORMATION
PROVIDED BY THE CLIENT. THESE DIMENSIONS ARE APPROXIMATE
AND SHOULD NOT BE USED FOR CONSTRUCTION PURPOSES.
CERTIFIED DIMENSIONS MUST BE OBTAINED FROM THE
DIMENSIONS.



PARTIAL SECOND FLOOR PLAN
1/8" = 1'-0"

A1
2.07

COTTON MILL CONDOMINIUMS
 820 Poyfarrs Street
 New Orleans, Louisiana 70130



NO. _____ DATE _____

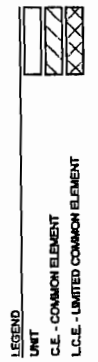
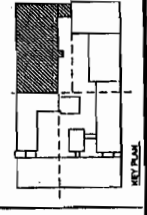
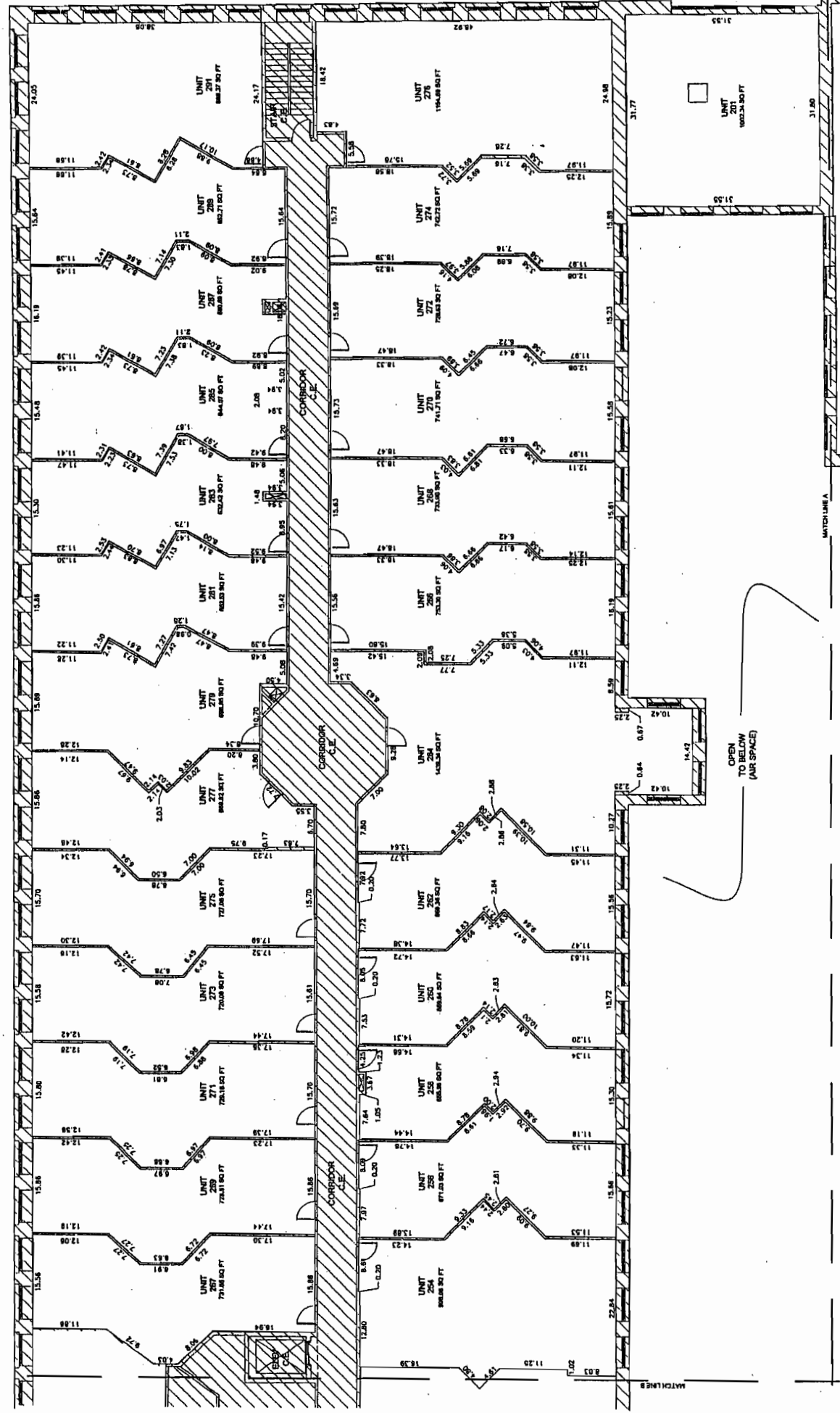
DRAWN BY: CREGG
 ISSUE DATE: 01-30-2004
 PROJECT NUMBER: 211
 DRAWING FILE NAME: 218

PARTIAL 2ND FLOOR OF BLDGS A & E

2.08

JOHN CHURCHILL CHASE STREET

CONSTANCE STREET



NOTE: ALL UNIT DIMENSIONS ARE FROM UNIT SIDE OF WALL TO UNIT SIDE OF UNIT. COMMON WALLS ARE TO CENTERLINE OF WALL. COMMON WALL TO INSIDE FACE OF EXTERIOR WALL.

NOTE: DIMENSIONS INDICATED ON THESE DRAWINGS WERE DETERMINED FROM THE ORIGINAL CONSTRUCTION DOCUMENTS DATED AUGUST 12, 1989 AND THEREFORE SHOULD NOT BE CONSIDERED CERTIFIED DIMENSIONS BUT INSTEAD APPROXIMATE BUILDING DIMENSIONS.

OPEN TO BELOW (AIR SPACE)

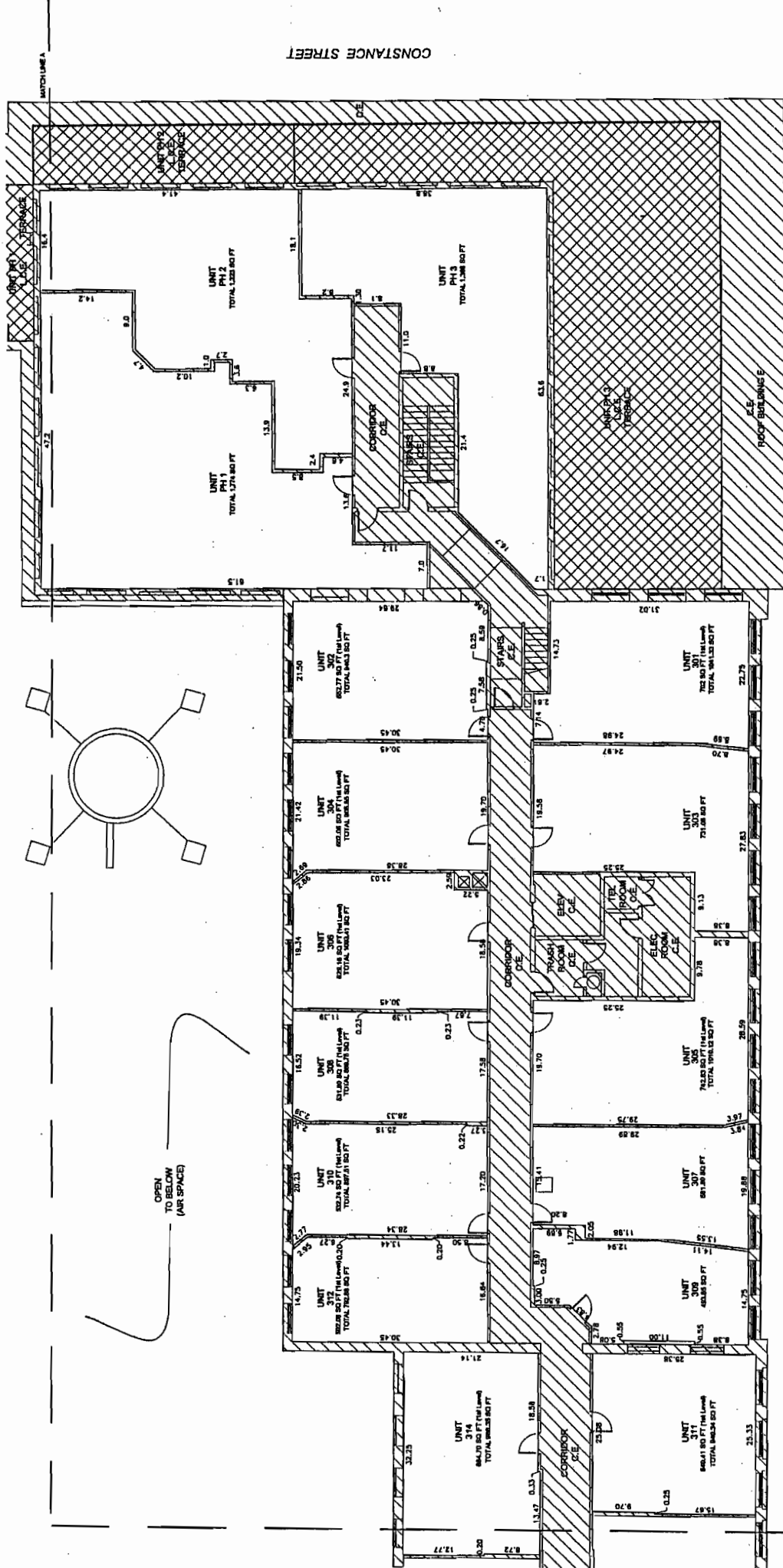
PARTIAL SECOND FLOOR PLAN
 1/8" = 1'-0"
 2.08

COTTON MILL
CONDOMINIUMS
920 Poyfarré Street
New Orleans, Louisiana 70130



HCI
ARCHITECTURAL, INC.
A PROFESSIONAL CORPORATION

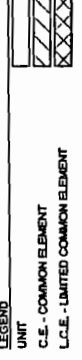
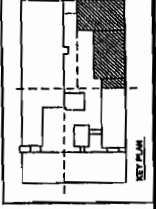
NO. _____ DATE _____



PROJECT NO. 91-00308
PROJECT NAME COTTON MILL CONDOMINIUMS
DRAWING FILE NAME 2.09
DATE

PARTIAL 3RD
FLR OF BLDGS
C, D & PHE

2.09



NOTE: DIMENSIONS ARE FROM LINE OF STUD TO UNIT SIDE OF EXTERIOR WALLS AND FROM UNIT SIDE OF STUD OF CORRIDOR WALL TO INSIDE FACE OF EXTERIOR WALL.

NOTE: DIMENSIONS INDICATED ON THESE DRAWINGS WERE DETERMINED FROM FIELD MEASUREMENTS IN CONJUNCTION WITH INFORMATION FROM THE ORIGINAL CONSTRUCTION DOCUMENTS OBTAINED AND CERTIFIED DIMENSIONS BUT NOT NEARLY APPROXIMATE BUILDING DIMENSIONS.

POEYFARRE STREET



PARTIAL THIRD FLOOR PLAN
AT 2.09
1/8" = 1'-0"

COTTON MILL CONDOMINIUMS

920 Poyfarré Street
New Orleans, Louisiana 70130

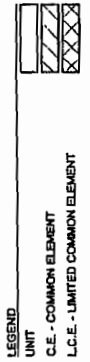
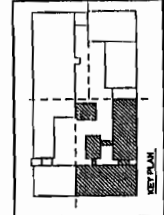
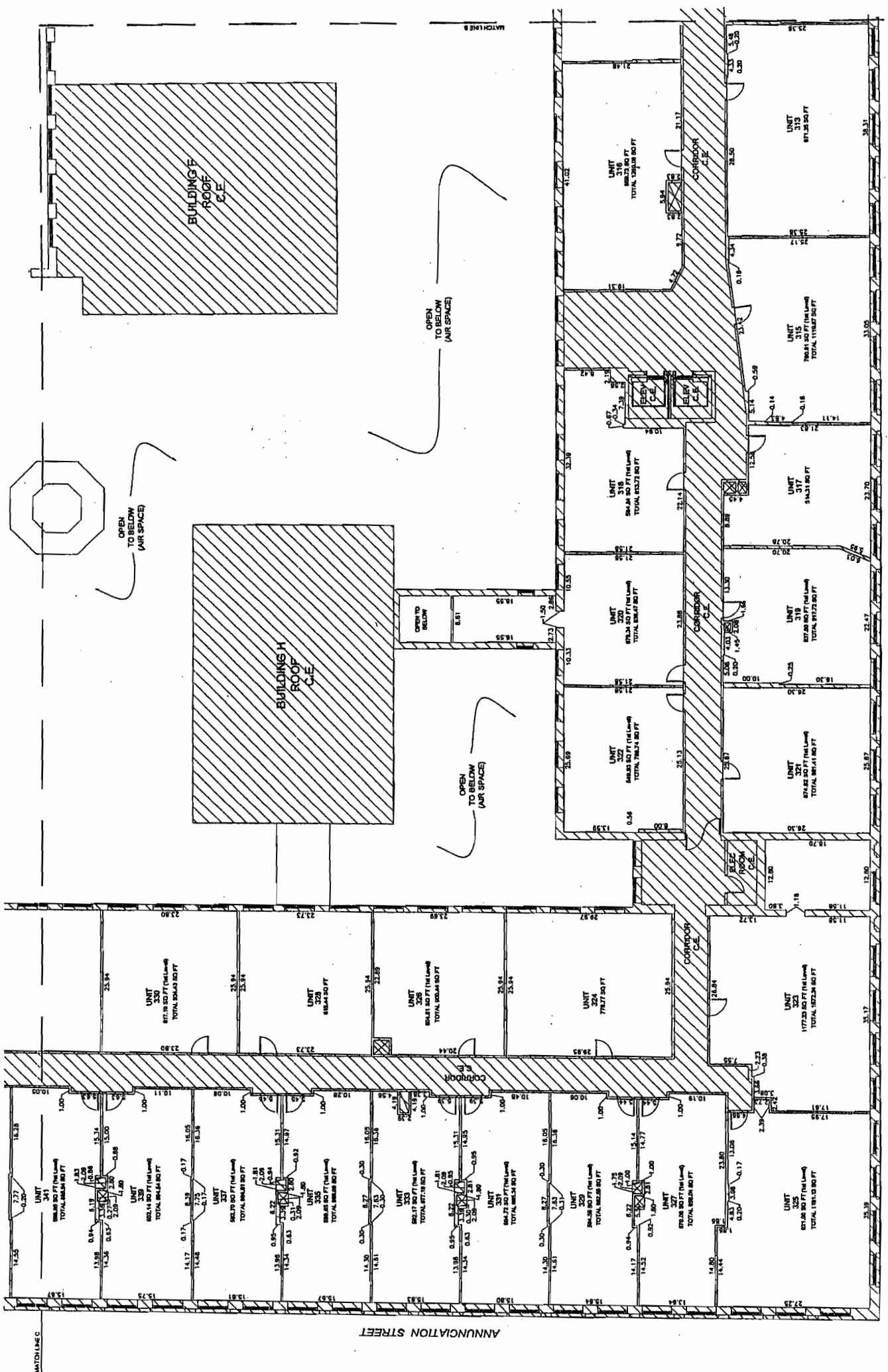


NO. ISSUE DATE

DESIGNER: HRI
ISSUE DATE: 01-20-2004
PROJECT NUMBER: 311
DRAWING FILE NAME: 2.10

PARTIAL 3RD FLR OF BLDGS B, C, H & F

2.10



NOTE:
ALL UNIT DIMENSIONS ARE FROM UNIT SET OF CORNER TO CORNER AND FROM UNIT SET OF CORNER TO WALL TO INSIDE FACE OF EXTERIOR WALL.

NOTE:
DIMENSIONS INDICATED ON THESE DRAWINGS WERE DETERMINED FROM FIELD MEASUREMENTS IN CONFORMANCE WITH INFORMATION FROM THE ORIGINAL CONSTRUCTION DOCUMENTS DATED AUGUST 12, 1999 AND THEREFORE SHOULD NOT BE CONSIDERED AS APPROXIMATE DIMENSIONS BUT RATHER APPROPRIATE BUILDING DIMENSIONS.

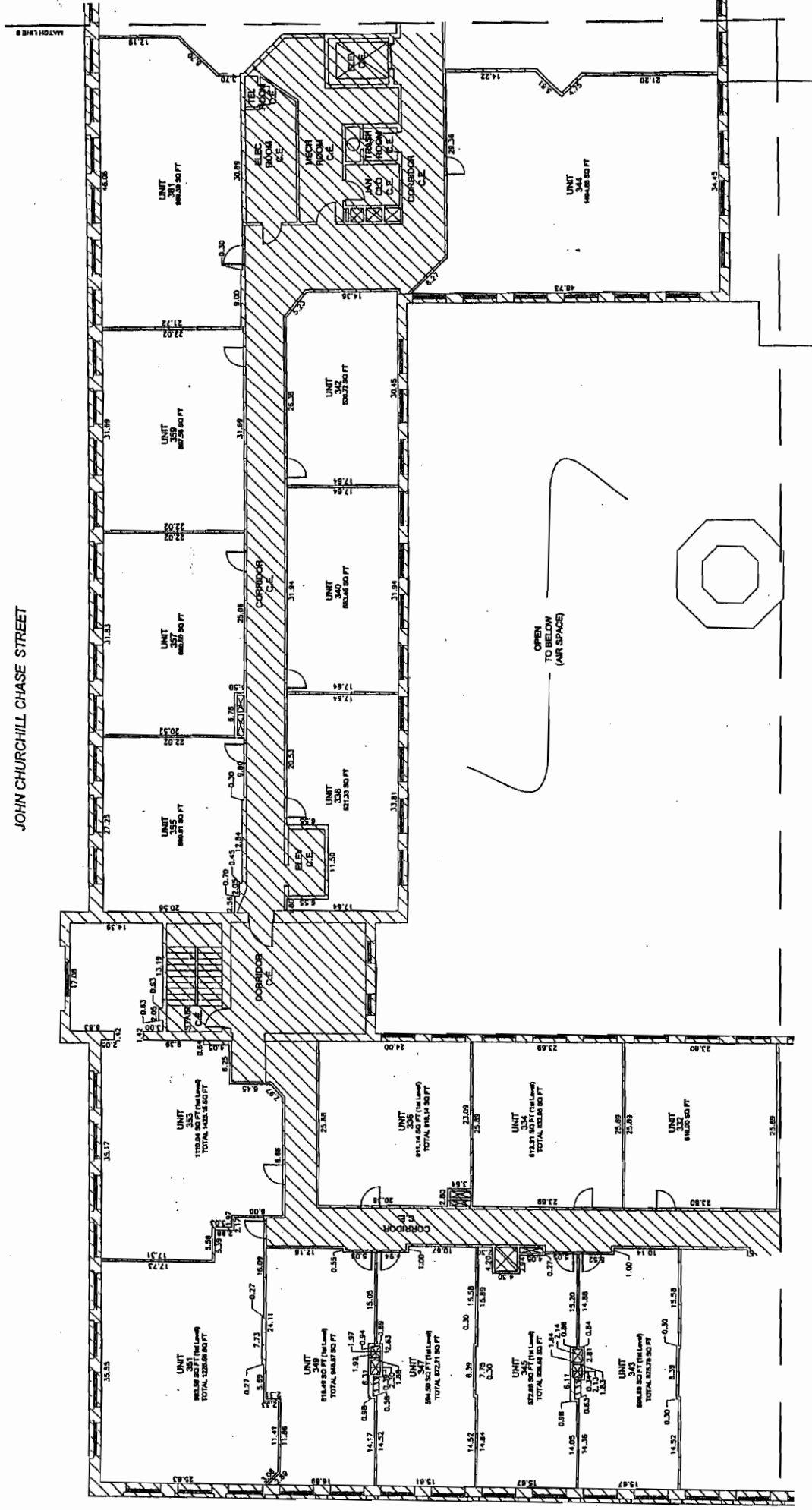


A1 PARTIAL THIRD FLOOR PLAN
1/8" = 1'-0"

COTTON MILL CONDOMINIUMS
 920 Poyfarré Street
 New Orleans, Louisiana 70130

JOHN CHURCHILL CHASE STREET

ANNUNCIATION STREET

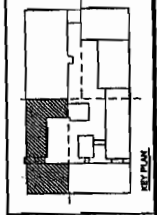


NO. 00000
 DATE
 PROJECT NUMBER
 DRAWING FILE NAME

HCI
 ARCHITECTURE, INC.
 100 Poyfarré Street
 New Orleans, Louisiana 70130

PARTIAL 3RD FLOOR OF BLDGS A & B

2.11



LEGEND
 UNIT
 C.E. - COMMON ELEMENT
 L.C.E. - LIMITED COMMON ELEMENT

NOTE:
 DIMENSIONS ARE FROM LINE SIDE OF STAIR TO UNIT SIDE OF BUILDING WALLS AND FROM UNIT SIDE OF STAIR TO CORRIDOR WALL, TO THESE FACES OF OUTDOOR WALL.

NOTE:
 DIMENSIONS INDICATED ON THESE DRAWINGS WERE DETERMINED FROM FIELD MEASUREMENTS IN CONJUNCTION WITH INFORMATION FROM THE ORIGINAL CONSTRUCTION DOCUMENTS DATED AND CERTIFIED DIMENSIONS BUT INSTEAD APPROXIMATE BUILDING DIMENSIONS.



PARTIAL THIRD FLOOR PLAN
 AT 1/8" = 1'-0"

EXHIBIT E

COTTON MILL CONDOMINIUMS
 920 Poylarre Street
 New Orleans, Louisiana 70130

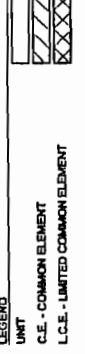
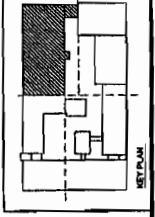


NO. ISSUE DATE

ISSUE DATE 01-30-2004
 PROJECT NUMBER 315
 DRAWING FILE NAME 212

PARTIAL 3RD FLOOR OF BLDG A

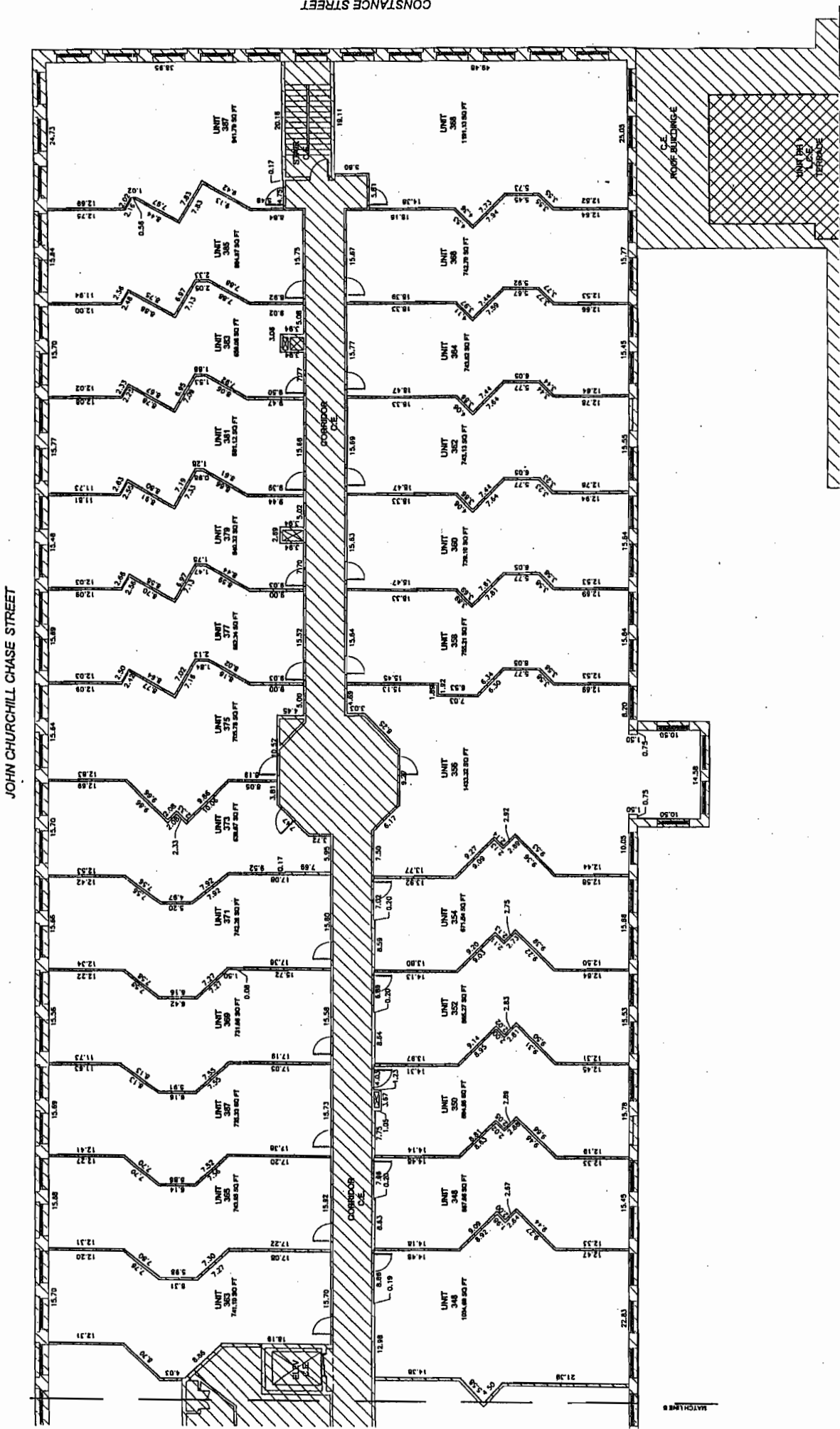
2.12



NOTE: ALL UNIT DIMENSIONS ARE FROM UNIT SIDE OF WALL TO INSIDE FACE OF EXTERIOR WALL AND FROM UNIT SIDE OF CORRIDOR WALL TO INSIDE FACE OF EXTERIOR WALL.

NOTE: DIMENSIONS INDICATED ON THESE DRAWINGS WERE DETERMINED FROM THE ORIGINAL CONSTRUCTION DOCUMENTS DATED AUGUST 12, 1998 AND THEREFORE SHOULD NOT BE CONSIDERED CERTIFIED DIMENSIONS BUT INSTEAD APPROXIMATE BUILDING DIMENSIONS.

PARTIAL THIRD FLOOR PLAN
 1/8" = 1'-0"
 2.12



COTTON MILL
CONDOMINIUMS
820 Poyfarré Street
New Orleans, Louisiana 70130



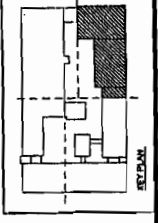
HCI
ARCHITECTURAL INC.
A PROFESSIONAL CORPORATION

NO. ISSUE DATE

DESIGNER: HRI
ISSUE DATE: 01-30-2004
PROJECT NUMBER: 371
DRAWING FILE NAME: 2.13

PARTIAL 3RD
FLR MEZZ OF
BLDGZ C & D

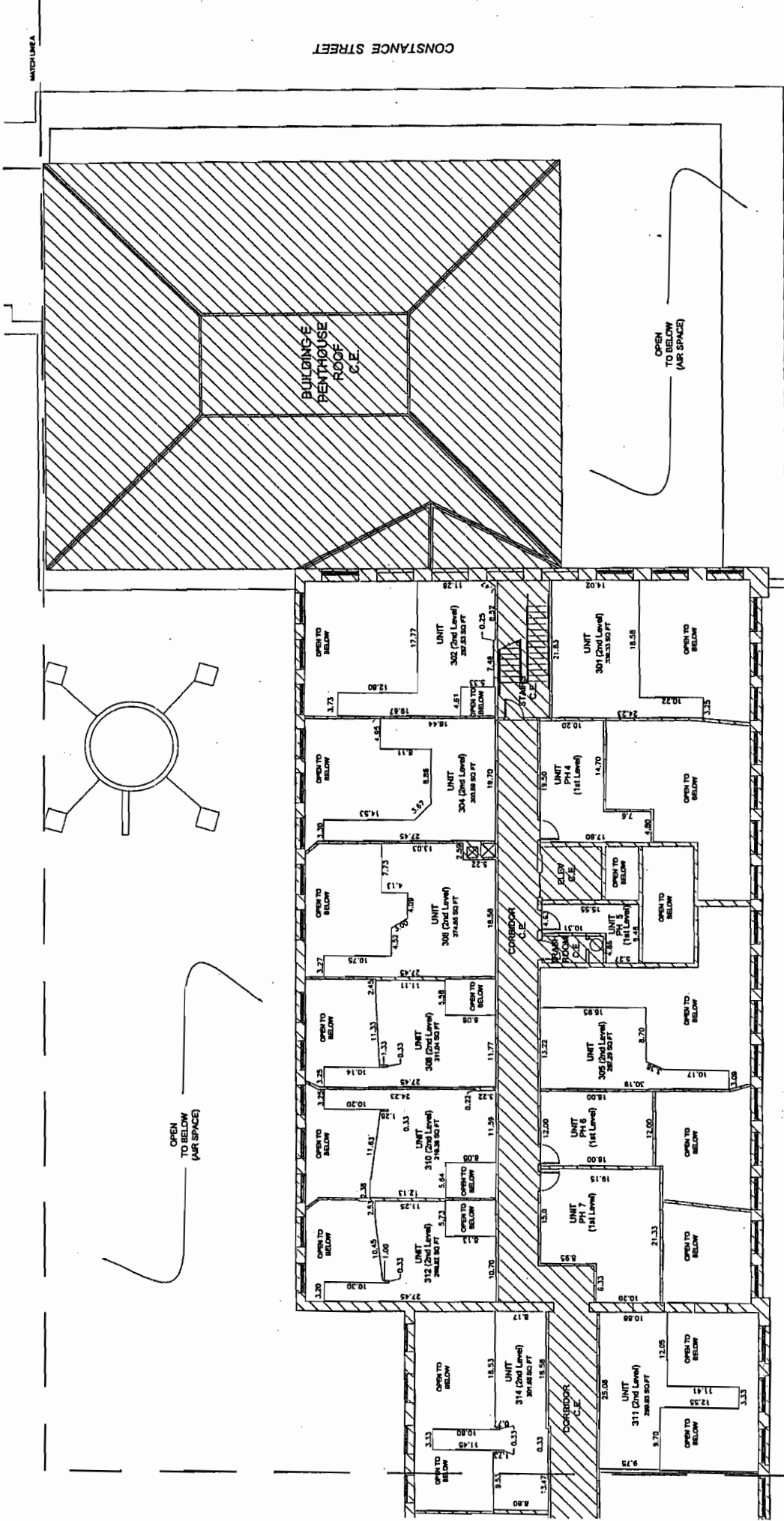
2.13



LEGEND
UNIT
C.E. - COMMON ELEMENT
L.C.E. - LIMITED COMMON ELEMENT

NOTE:
DIMENSIONS ARE FROM UNIT SIDE OF
STUD TO UNIT SIDE OF STUD OF EXTERIOR WALLS
AND FROM UNIT SIDE OF STUD OF COMMON
WALL TO INSIDE FACE OF EXTERIOR WALL.

NOTE:
DIMENSIONS INDICATED ON THESE DRAWINGS WERE DETERMINED
FROM FIELD MEASUREMENTS IN CONFORMANCE WITH INFORMATION
FROM THE ORIGINAL CONSTRUCTION DOCUMENTS. SAID
DIMENSIONS ARE APPROXIMATE AND NOT TO BE
CERTIFIED DIMENSIONS BUT INSTEAD APPROXIMATE BUILDING
DIMENSIONS.



POEYFARRE STREET

PARTIAL THIRD FLOOR MEZZ PLAN

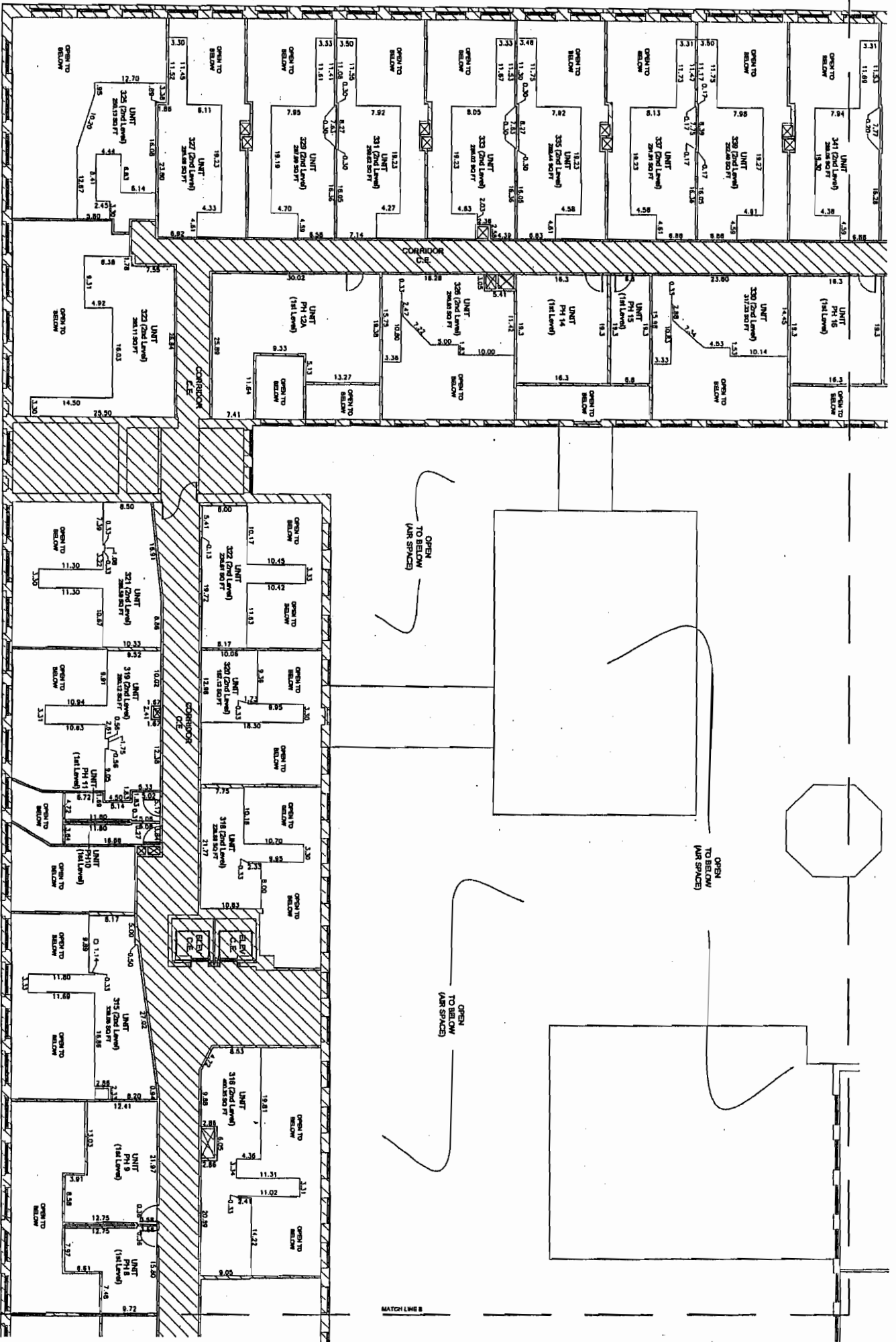
1/8" = 1'-0"

A1

2.13

MATCH LINE C

ANNUNCIATION STREET



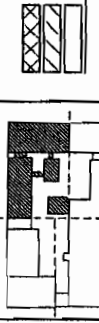
2.14 PARTIAL THIRD FLOOR MEZZ PLAN



NOTE
 DIMENSIONS INDICATED ON THESE DRAWINGS WERE DETERMINED FROM FIELD MEASUREMENTS IN CONJUNCTION WITH INFORMATION PROVIDED BY THE ARCHITECT. DIMENSIONS SHALL BE TAKEN TO THE CENTERLINE OF WALLS UNLESS OTHERWISE SPECIFIED. DIMENSIONS OF COMMON ELEMENTS SHALL BE APPROXIMATE.

NOTE
 UNIT DIMENSIONS ARE FROM UNIT FACE OF STAIR TO UNIT FACE OF STAIR OR COMMON WALL TO UNIT FACE OF COMMON WALL. DIMENSIONS SHALL BE TAKEN TO THE CENTERLINE OF STAIR WALL.

LEGEND
 UNIT
 C.E. - COMMON ELEMENT
 L.C.E. - LIMITED COMMON ELEMENT



PARTIAL 3RD FLR MEZZ OF BLDGS B & C

2.14

NO.	REVISION	DATE

HCI ARCHITECTURE INC. AN AFFILIATE OF HOK COMPANY

HRL Properties, Inc.

COTTON MILL CONDOMINIUMS

920 Poeyfarre Street
 New Orleans, Louisiana 70130

EXHIBIT E

COTTON MILL
CONDOMINIUMS
920 Poyfarré Street
New Orleans, Louisiana 70130



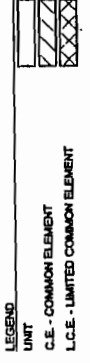
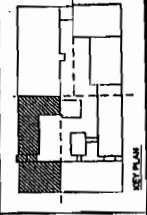
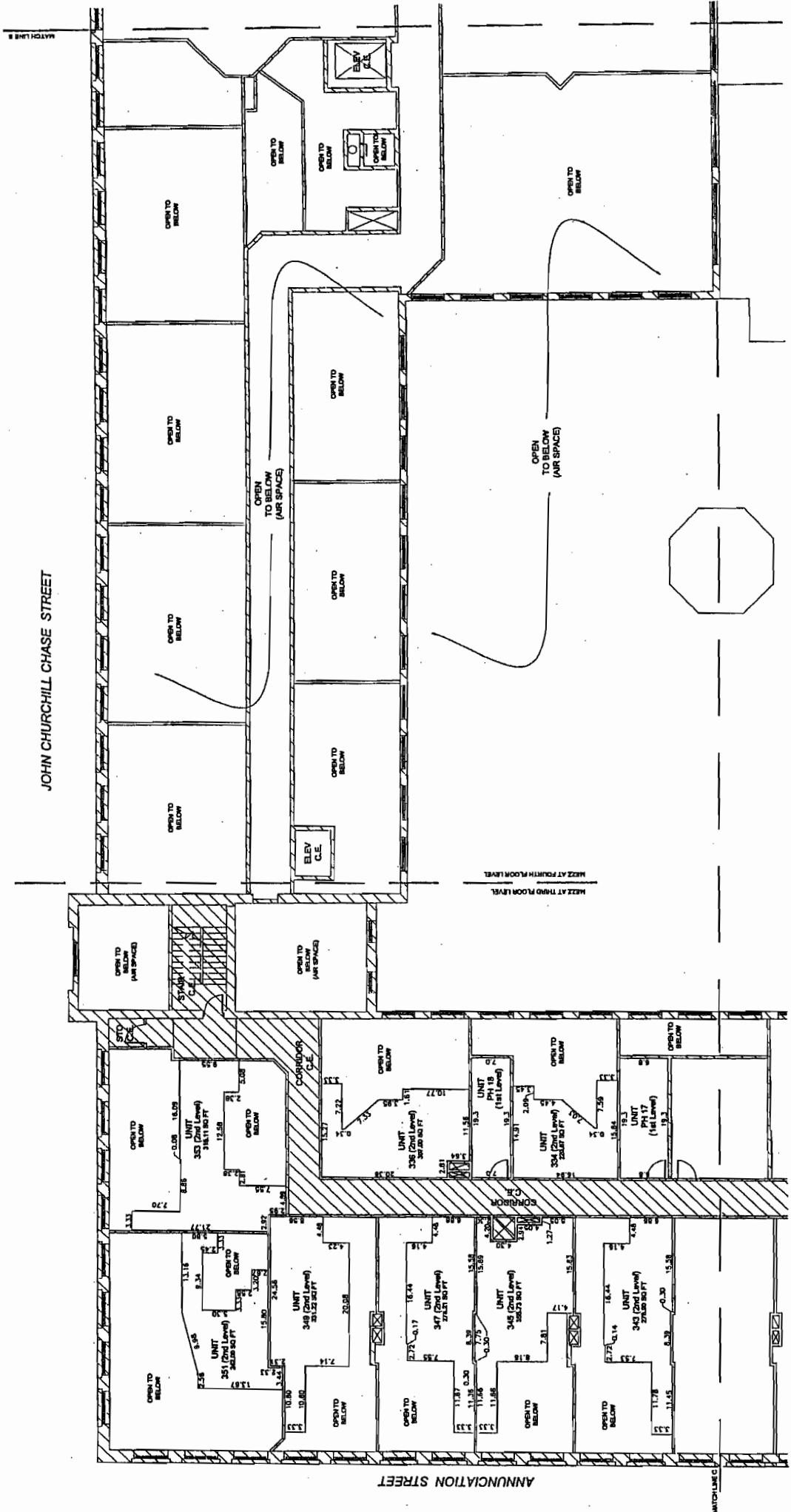
HCI
ARCHITECTURE INC.
A PROFESSIONAL CORPORATION

NO. SCALE DATE

PROJECT: COTTON MILL
ISSUE DATE: 04-20-2004
PROJECT NUMBER: 311
DRAWING FILE NAME: 2.15

PARTIAL 3RD
FLR MEZZ OF
BLDGS A & B

2.15



NOTE:
ALL UNIT DIMENSIONS ARE FROM UNIT SIDE OF
STUD TO UNIT SIDE OF STUD OF EXTERIOR WALL
OR TO INSIDE FACE OF EXTERIOR WALL.

NOTE:
DIMENSIONS INDICATED ON THESE DRAWINGS WERE DETERMINED
FROM FIELD MEASUREMENTS IN CONJUNCTION WITH INFORMATION
OBTAINED FROM THE ARCHITECT'S RECORD DRAWINGS DATED
AUGUST 12, 1998 AND THEREFORE SHOULD NOT BE CONSIDERED
CERTIFIED DIMENSIONS BUT INSTEAD APPROXIMATE BUILDING
DIMENSIONS.

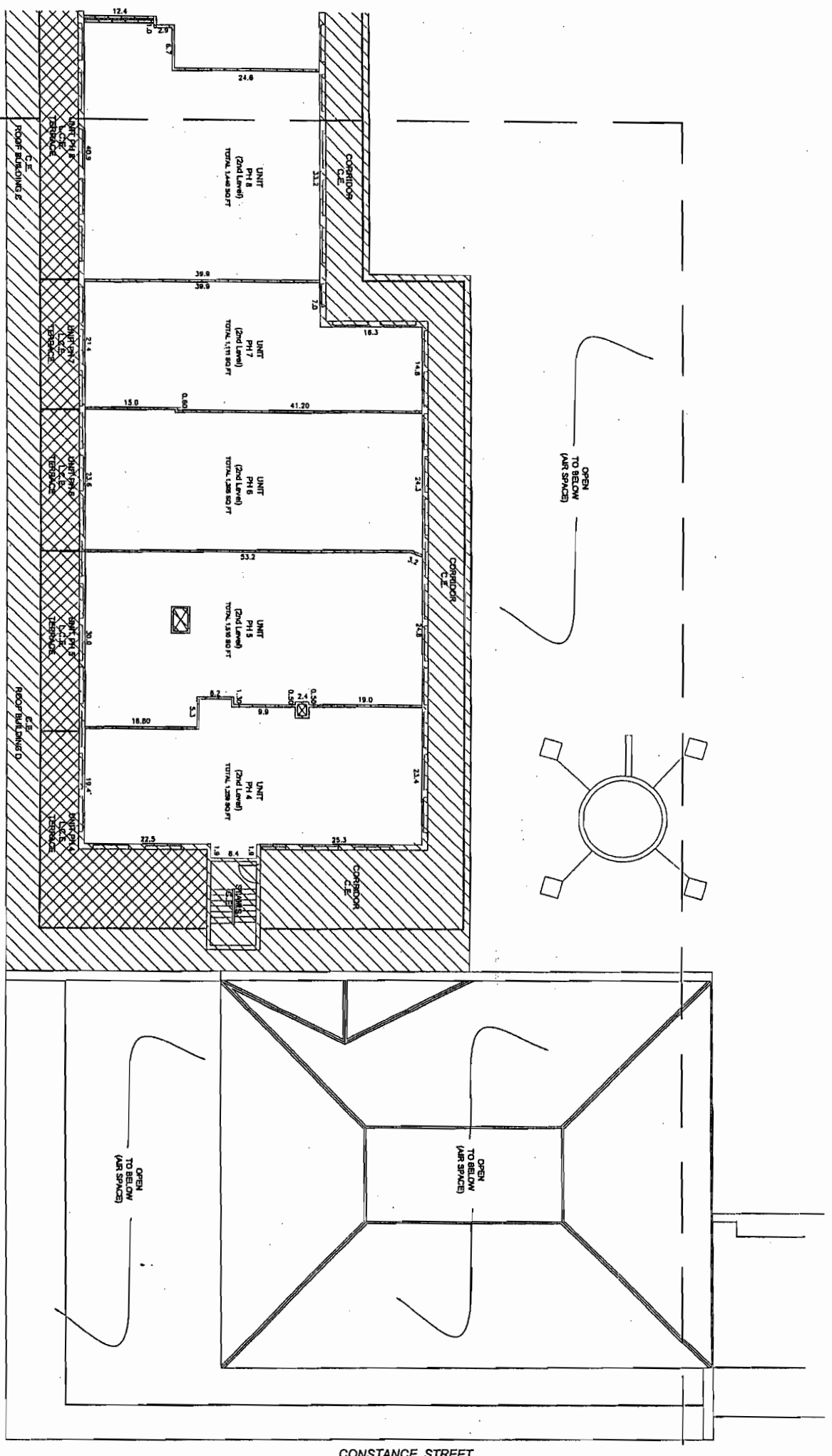
**COTTON MILL
CONDOMINIUMS**
920 Poyfarré Street
New Orleans, Louisiana 70130



NO.	ISSUE	DATE

CLIENT	DESIGNER
HFCI Properties, Inc.	HFCI ARCHITECTURE, INC.
PROJECT NUMBER	DATE
217	11-20-2009
DRAWING FILE NAME	PROJECT NUMBER
217	217

**PARTIAL 4TH
FLR OF BLDGS
PH C & PH D**
2.17



MATCHLINE B

POEYFARRE STREET

CONSTANCE STREET

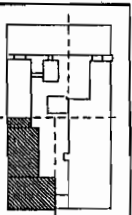
WALL

A1 PARTIAL FOURTH FLOOR PLAN
217 1/8" = 1'-0"

NOTE:
DIMENSIONS INDICATED ON THESE DRAWINGS WERE OBTAINED FROM THE ORIGINAL CONSTRUCTION DOCUMENTS DATED AUGUST 12, 1980 AND THEREFORE SHOULD NOT BE CONSIDERED DIMENSIONS BUT RATHER APPROXIMATE BUILDING DIMENSIONS.

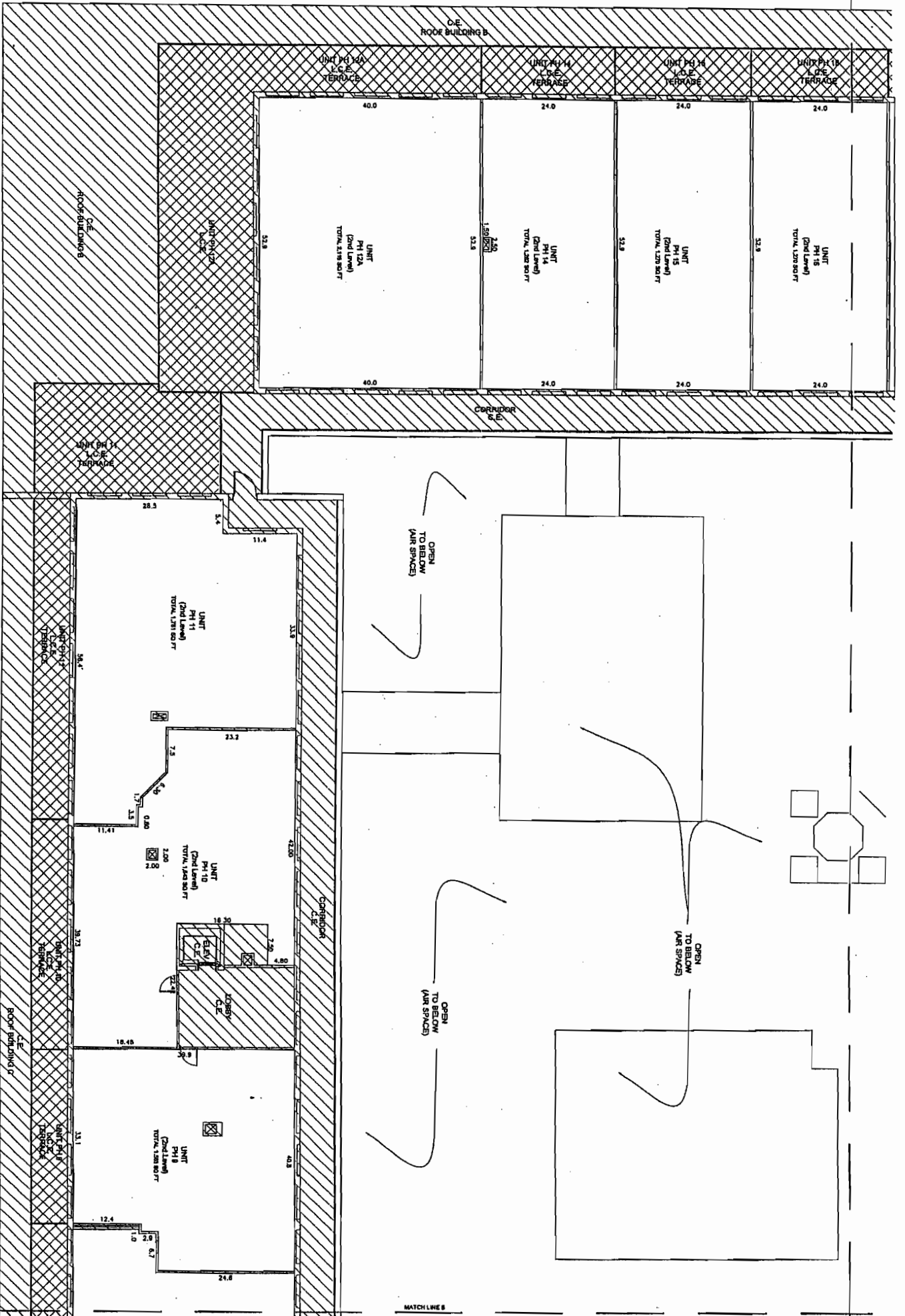
NOTE:
ALL UNIT DIMENSIONS ARE FROM LINES OF WALL TO LINES OF WALL UNLESS OTHERWISE NOTED. DIMENSIONS TO CENTER OF WALL TO INDICATE POSITION OF WALL.

LEGEND
UNIT
C.E. - COMMON ELEMENT
L.C.E. - LIMITED COMMON ELEMENT



MATCHLINE C

ANNUNCIATION STREET



MATCH LINE B

COTTON MILL CONDOMINIUMS

920 Poeyfarre Street
New Orleans, Louisiana 70130



HHI Properties, Inc.



HCI Architecture, Inc.
Architectural Firm
Professional Seal Required

NO. ISSUE DATE

DESIGNER	CHKD
DRAWN	CHKD
DATE	07-20-2009
PROJECT NUMBER	2.18
DRAWING TITLE NUMBER	2.18

PARTIAL 4TH
FLR OF BLDGS
PH B & PH C

2.18

A1 PARTIAL FOURTH FLOOR PLAN

2.18

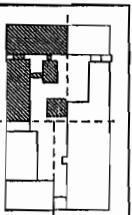


0 10'

NOTE:
DIMENSIONS INDICATED ON THESE DRAWINGS WERE OBTAINED FROM FIELD MEASUREMENTS IN CONNECTION WITH PERMITS FROM THE ORIGINAL CONSTRUCTION DOCUMENTS DATED AUGUST 12, 1999 AND THEREFORE SHOULD NOT BE CONSIDERED DIMENSIONS BUT RATHER APPROXIMATE DIMENSIONS.

NOTE:
ALL UNIT DIMENSIONS ARE FROM UNIT FACE OF WALL TO INSIDE FACE OF EXTENSION WALL.

LEGEND
UNIT
C.E. - COMMON ELEMENT
L.C.E. - LIMITED COMMON ELEMENT



COTTON MILL CONDOMINIUMS
 820 Poeyarre Street
 New Orleans, Louisiana 70130



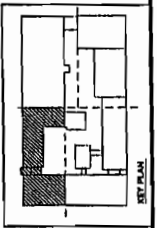
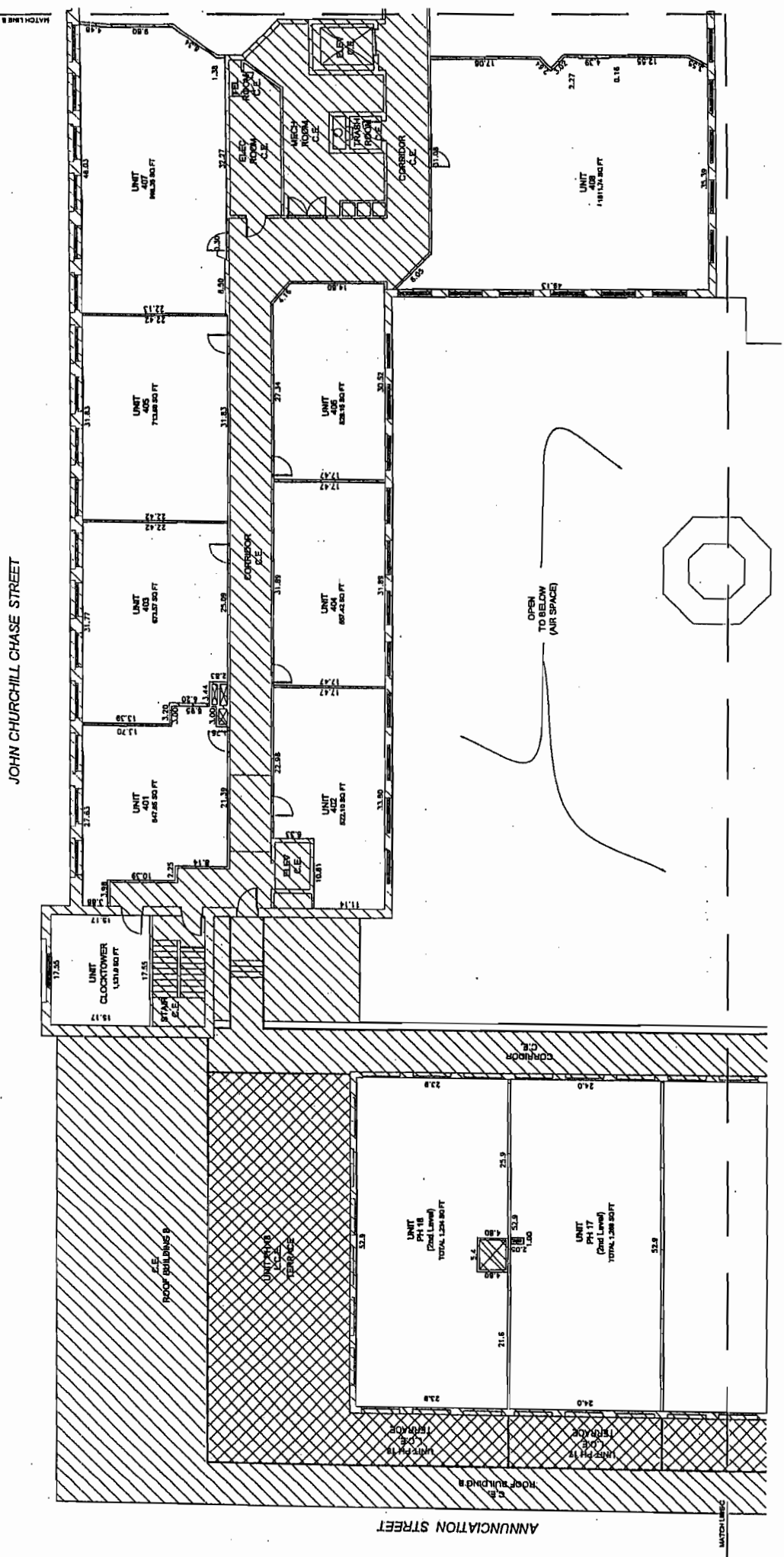
HCI ARCHITECTURE, INC.
 ARCHITECTS

NO. ISSUE DATE

OWNER: CHRSO
 ISSUE DATE: 01-30-08
 PROJECT NUMBER: 211
 DRAWING FILE NAME: 2.19

PARTIAL 4TH FLR OF BLDG A & PH B

2.19



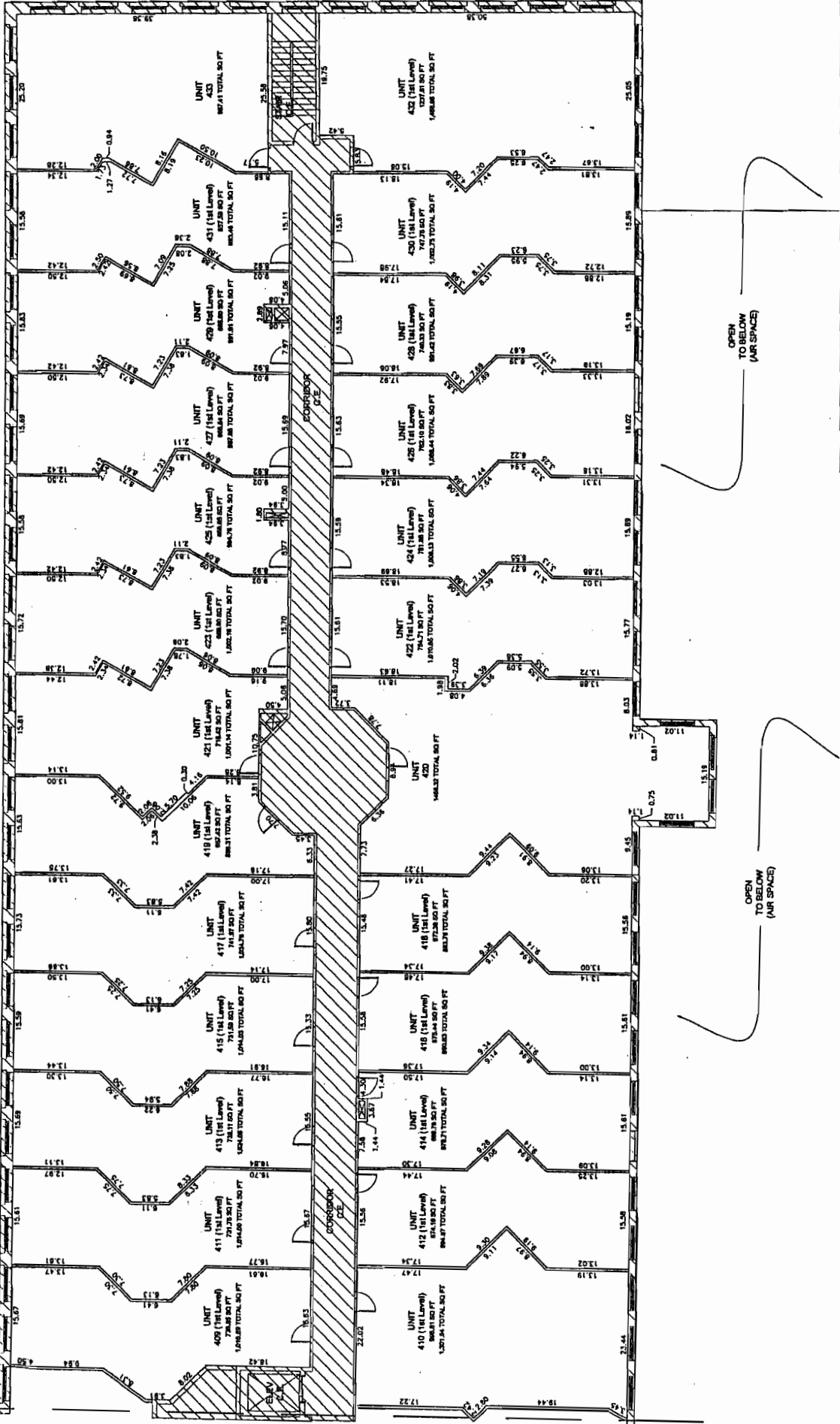
LEGEND
 UNIT
 C.E. - COMMON ELEMENT
 C.C.E. - LIMITED COMMON ELEMENT

NOTE: DIMENSIONS ARE FROM UNIT FACE OF STAIR TO UNIT FACE OF EXTERIOR WALLS AND FROM UNIT FACE OF STAIR TO CORRIDOR WALL TO INSIDE FACE OF EXTERIOR WALL.

NOTE: DIMENSIONS INDICATED ON THESE DRAWINGS WERE DETERMINED FROM FIELD MEASUREMENTS IN CONJUNCTION WITH INFORMATION FROM THE ORIGINAL CONSTRUCTION DOCUMENTS DATED 01/30/08. DIMENSIONS MAY VARY SLIGHTLY FROM THE INDICATED DIMENSIONS BUT INTEND APPROXIMATE BUILDING DIMENSIONS.

PARTIAL FOURTH FLOOR PLAN
 1/8" = 1'-0"
 NORTH

JOHN CHURCHILL CHASE STREET

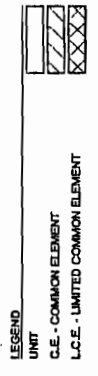
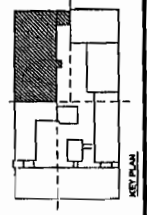


CONSTANCE STREET

SWITCH LINE A

OPEN TO BELOW (AIR SPACE)

OPEN TO BELOW (AIR SPACE)



NOTE: DIMENSIONS ARE FROM UNIT SIDE OF STUD WALL TO UNIT SIDE OF STUD WALL OF STUB WALLS AND FROM UNIT SIDE OF STUD WALL TO EXTERIOR FACE OF EXTERIOR WALL.

NOTE: DIMENSIONS INDICATED ON THESE DRAWINGS WERE DETERMINED FROM FIELD MEASUREMENTS IN CONJUNCTION WITH INFORMATION PROVIDED BY THE ARCHITECT. DIMENSIONS SHOULD NOT BE CONSIDERED CERTIFIED DIMENSIONS BUT INSTEAD APPROXIMATE BUILDING DIMENSIONS.



PARTIAL FOURTH FLOOR PLAN
1/8" = 1'-0"

COTTON MILL CONDOMINIUMS

920 Poeyarre Street
New Orleans, Louisiana 70130

EXHIBIT E

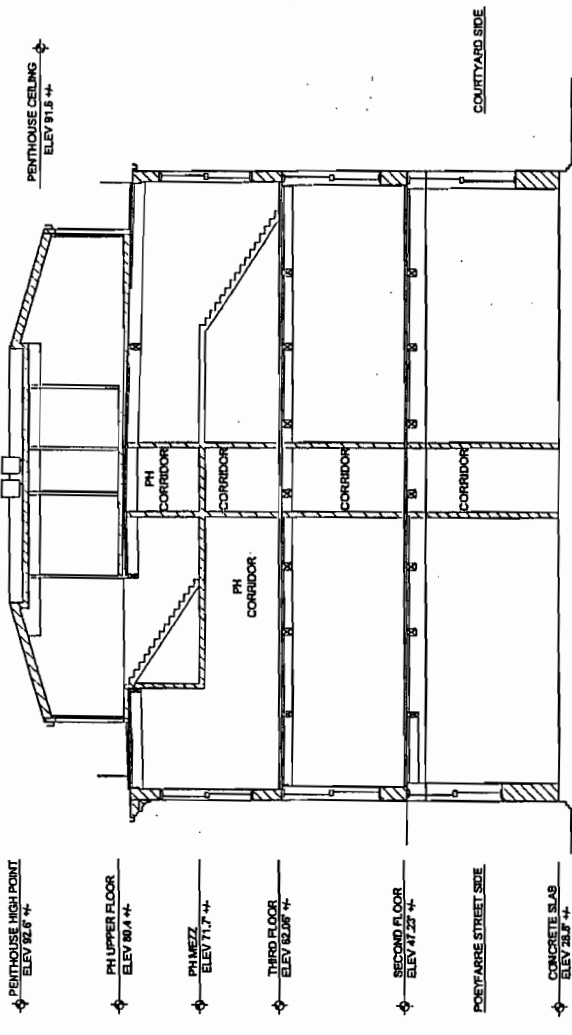


NO. ISSUE DATE

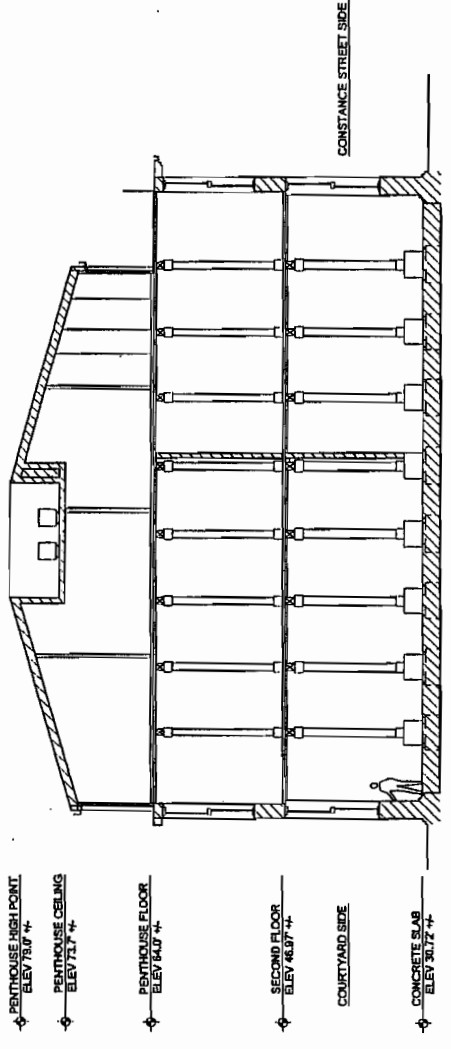
DATE: 01-13-2009
PROJECT NUMBER: 371
DRAWING FILE NAME: 2.20

PARTIAL 4TH FLOOR OF BLDG A

2.20



CZ SECTION - BUILDING D
3.01 1/8" = 1'-0"



A2 SECTION - BUILDING E
3.01 1/8" = 1'-0"

COTTON MILL
CONDOMINIUMS

920 Poeyfarre Street
New Orleans, Louisiana 70130



HCI
ARCHITECTURE, INC.
A PROFESSIONAL CORPORATION

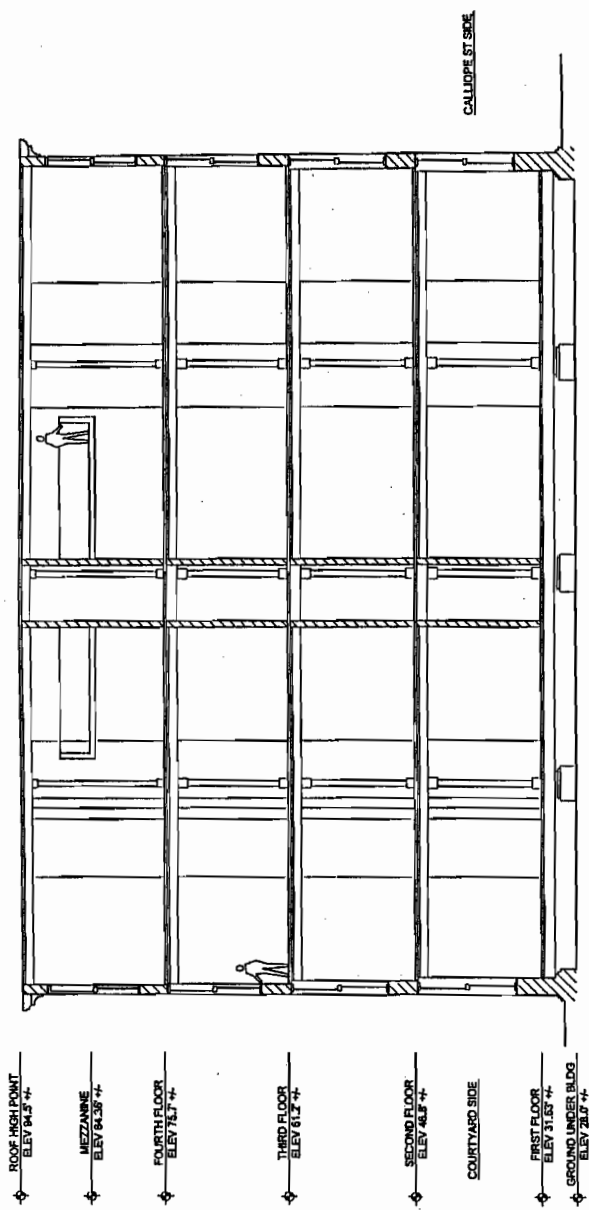
NO. _____ DATE _____
SCALE _____

DRAWN BY _____ CHECKED BY _____
ISSUE DATE 01-20-2004
PROJECT NUMBER 311
DRAWING FILE NAME 3.01

BLDG SECTIONS
BLDGS D & E

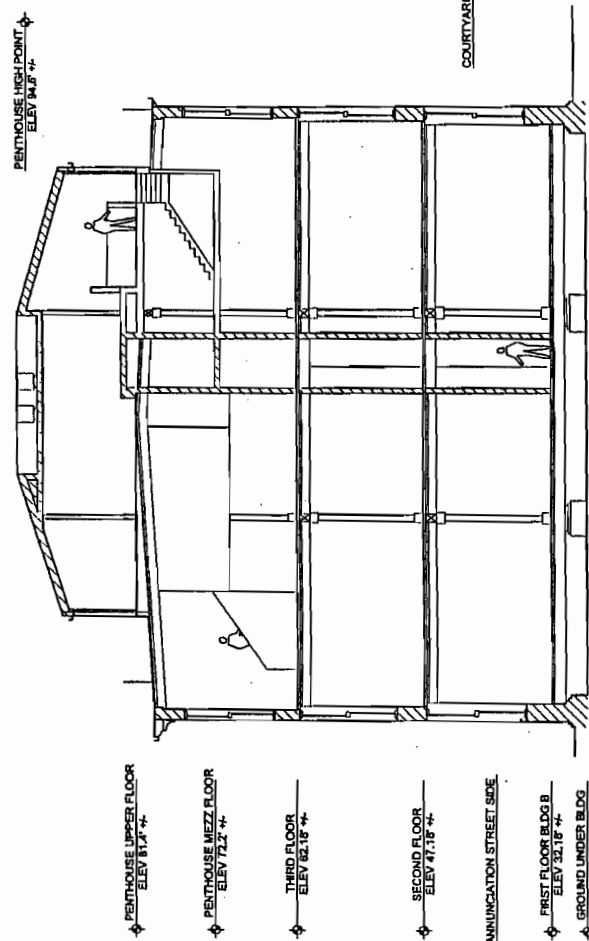
3.01

EXHIBIT E



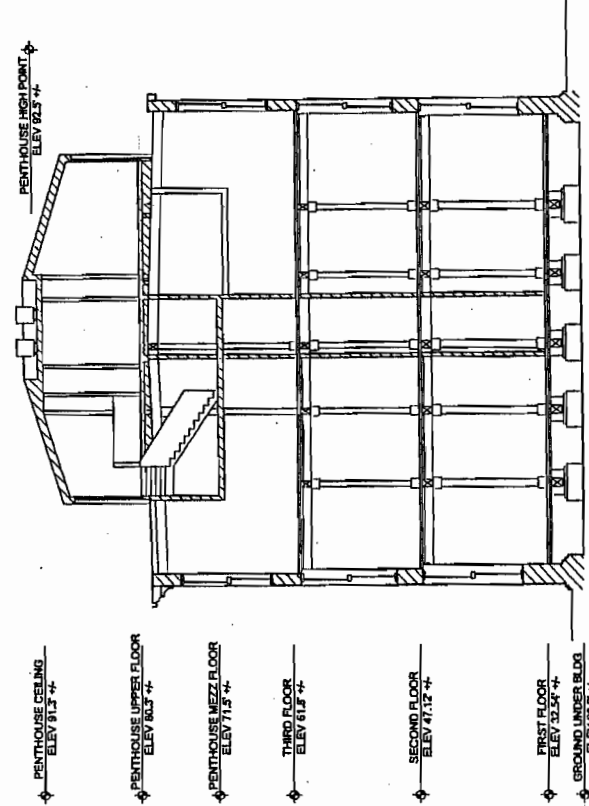
- ROOF HIGH POINT
ELEV 94.5' ±
- MEZZANINE
ELEV 84.35' ±
- FOURTH FLOOR
ELEV 75.7' ±
- THIRD FLOOR
ELEV 61.2' ±
- SECOND FLOOR
ELEV 48.9' ±
- COURTYARD SIDE
- FIRST FLOOR
ELEV 31.65' ±
- GROUND UNDER BLDG.
ELEV 28.0' ±

C2 SECTION - BUILDING A
1/8" = 1'-0"
3.02



- PENTHOUSE UPPER FLOOR
ELEV 81.8' ±
- PENTHOUSE MEZZ FLOOR
ELEV 72.7' ±
- THIRD FLOOR
ELEV 62.15' ±
- SECOND FLOOR
ELEV 47.15' ±
- ANNUNCIATION STREET SIDE
- FIRST FLOOR BLDG B
ELEV 32.15' ±
- GROUND UNDER BLDG
ELEV 27.0' ±

A1 SECTION - BUILDING B
1/8" = 1'-0"
3.02



- PENTHOUSE CEILING
ELEV 81.5' ±
- PENTHOUSE UPPER FLOOR
ELEV 80.3' ±
- PENTHOUSE MEZZ FLOOR
ELEV 71.5' ±
- THIRD FLOOR
ELEV 61.8' ±
- SECOND FLOOR
ELEV 47.12' ±
- FIRST FLOOR
ELEV 32.58' ±
- GROUND UNDER BLDG
ELEV 28.0' ±

A3 SECTION - BUILDING C
1/8" = 1'-0"
3.02

COTTON MILL
CONDOMINIUMS

920 Poylarra Street
New Orleans, Louisiana 70130

EXHIBIT E



HCI
ARCHITECTURE, INC.
A PROFESSIONAL CORPORATION

NO. TITLE DATE

DESIGNER: CHENG
SCALE DATE: 01-20-2004
PROJECT NUMBER: 311
DRAWING FILE NAME: 3.02

BLDG SECTIONS
BLDGS A, B & C

3.02